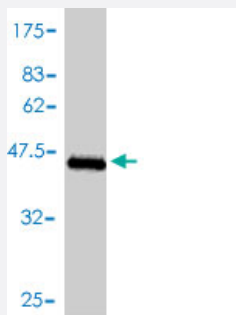


# TNNC1 polyclonal antibody (A01)

Catalog # H00007134-A01

Size 50 uL

## Applications



Western Blot detection against Immunogen (43.82 KDa) .

## Specification

<b>Product Description</b>	Mouse polyclonal antibody raised against a full-length recombinant TNNC1.
<b>Immunogen</b>	TNNC1 (AAH30244, 1 a.a. ~ 161 a.a) full-length recombinant protein with GST tag.
<b>Sequence</b>	MDDYKAAVEQLTEEQKNEFKAAFDIFVLGAEDGCISTKELGKVMRMLGQNPTPEELQEMIDEVD EDGSGTVDFDEFLVMMVRCMKDDSKGKSEEELSDLFRMFDKNADGYIDLDELKIMLQATGETITE DDIEELMKDGDKNNDGRIDYDEFLEFMKGVE
<b>Host</b>	Mouse
<b>Reactivity</b>	Human
<b>Interspecies Antigen Sequence</b>	Mouse (99); Rat (99)
<b>Quality Control Testing</b>	Antibody Reactive Against Recombinant Protein. Western Blot detection against Immunogen (43.82 KDa) .
<b>Storage Buffer</b>	50 % glycerol
<b>Storage Instruction</b>	Store at -20°C or lower. Aliquot to avoid repeated freezing and thawing.

## Applications

- Western Blot (Recombinant protein)

[Protocol Download](#)

- ELISA

## Gene Info — TNNC1

Entrez GeneID	<a href="#">7134</a>
GeneBank Accession#	<a href="#">BC030244</a>
Protein Accession#	<a href="#">AAH30244</a>
Gene Name	TNNC1
Gene Alias	CMD1Z, TNC, TNNC
Gene Description	troponin C type 1 (slow)
Omim ID	<a href="#">191040</a>
Gene Ontology	<a href="#">Hyperlink</a>
Gene Summary	Troponin is a central regulatory protein of striated muscle contraction, and together with tropomyosin, is located on the actin filament. Troponin consists of 3 subunits: TnI, which is the inhibitor of actomyosin ATPase; TnT, which contains the binding site for tropomyosin; and TnC, the protein encoded by this gene. The binding of calcium to TnC abolishes the inhibitory action of TnI, thus allowing the interaction of actin with myosin, the hydrolysis of ATP, and the generation of tension. Mutations in this gene are associated with cardiomyopathy dilated type 1Z. [provided by RefSeq]
Other Designations	cardiac troponin C slow twitch skeletal/cardiac muscle troponin C troponin C, slow troponin C1, slow

## Pathway

- [Calcium signaling pathway](#)
- [Cardiac muscle contraction](#)
- [Hypertrophic cardiomyopathy \(HCM\)](#)

## Disease

- [Cardiomyopathy](#)
- [Genetic Predisposition to Disease](#)