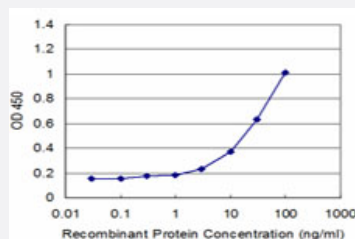


# TMPRSS2 monoclonal antibody (M05), clone 2F4

Catalog # H00007113-M05

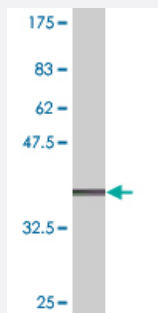
Size 100 ug

## Applications



### Sandwich ELISA (Recombinant protein)

Detection limit for recombinant GST tagged TMPRSS2 is approximately 3ng/ml as a capture antibody.



Western Blot detection against Immunogen (37.84 KDa) .

## Specification

Product Description	Mouse monoclonal antibody raised against a partial recombinant TMPRSS2.
Immunogen	TMPRSS2 (NP_005647, 383 a.a. ~ 492 a.a) partial recombinant protein with GST tag. MW of the GST tag alone is 26 KDa.
Sequence	GWGATEEKGKTSEVLNAAKVLLIETQRCNSRYVDNLITPAMICAGFLQGNVDSCQGDSGGPLVT SKNNWWLIGDTSWGSGCAKAYRPGVYGNVMVFTDWYRQMRADG
Host	Mouse
Reactivity	Human

Interspecies Antigen Sequence	Mouse (84); Rat (85)
Isotype	IgG2a Kappa
Quality Control Testing	Antibody Reactive Against Recombinant Protein. Western Blot detection against Immunogen (37.84 KDa) .
Storage Buffer	In 1x PBS, pH 7.4
Storage Instruction	Store at -20°C or lower. Aliquot to avoid repeated freezing and thawing.

## Applications

- Western Blot (Recombinant protein)

[Protocol Download](#)

- Sandwich ELISA (Recombinant protein)

Detection limit for recombinant GST tagged TMPRSS2 is approximately 3ng/ml as a capture antibody.

[Protocol Download](#)

- ELISA

## Gene Info — TMPRSS2

Entrez GeneID	<a href="#">7113</a>
GeneBank Accession#	<a href="#">NM_005656</a>
Protein Accession#	<a href="#">NP_005647</a>
Gene Name	TMPRSS2
Gene Alias	FLJ41954, PP9284, PRSS10
Gene Description	transmembrane protease, serine 2
Omim ID	<a href="#">602060</a>
Gene Ontology	<a href="#">Hyperlink</a>

**Gene Summary**

This gene encodes a protein that belongs to the serine protease family. The encoded protein contains a type II transmembrane domain, a receptor class A domain, a scavenger receptor cysteine-rich domain and a protease domain. Serine proteases are known to be involved in many physiological and pathological processes. This gene was demonstrated to be up-regulated by androgenic hormones in prostate cancer cells and down-regulated in androgen-independent prostate cancer tissue. The protease domain of this protein is thought to be cleaved and secreted into cell media after autocleavage. Alternatively spliced transcript variants encoding different isoforms have been found for this gene. [provided by RefSeq]

**Other Designations**

epitheliasin

**Publication Reference**

- [SARS-CoV-2 variants show resistance to neutralization by many monoclonal and serum-derived polyclonal antibodies.](#)

Michael Diamond, Rita Chen, Xuping Xie, James Case, Xianwen Zhang, Laura VanBlargan, Yang Liu, Jianying Liu, John Errico, Emma Winkler, Naveenchandra Suryadevara, Stephen Tahan, Jackson Turner, Wooseob Kim, Aaron Schmitz, Mahima Thapa, David Wang, Andrianus Boon, Dora Pinto, Rachel Presti, Jane Oâ Halloran, Alfred Kim, Parakkal Deepak, Daved Fremont, Davide Corti, Herbert Virgin, James Crowe, Lindsay Droit, Ali Ellebedy, Pei-Yong Shi, Pavlo Gilchuk.

Research Square 2021 Feb; [Epub].

Application: Flow Cyt, Monkey, Vero cells

**Disease**

- [Genetic Predisposition to Disease](#)
- [Prostate cancer](#)
- [Prostatic Neoplasms](#)