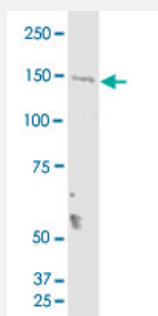


TMEM1 monoclonal antibody (M01), clone 5B4

Catalog # H00007109-M01

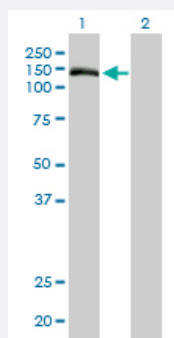
Size 100 ug

Applications



Western Blot (Cell lysate)

TMEM1 monoclonal antibody (M01), clone 5B4. Western Blot analysis of TRAPPC10 expression in Jurkat.

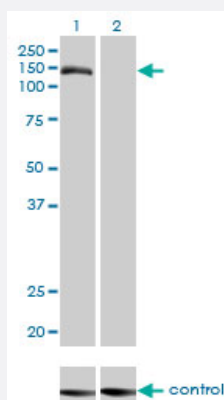


Western Blot (Transfected lysate)

Western Blot analysis of TMEM1 expression in transfected 293T cell line by TMEM1 monoclonal antibody (M01), clone 5B4.

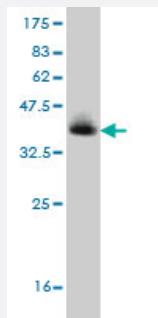
Lane 1: TMEM1 transfected lysate(142.2 KDa).

Lane 2: Non-transfected lysate.



RNAi Knockdown (Antibody validated)

Western blot analysis of TMEM1 over-expressed 293 cell line, cotransfected with TMEM1 Validated Chimera RNAi (Cat # H00007109-R01V) (Lane 2) or non-transfected control (Lane 1). Blot probed with TMEM1 monoclonal antibody (M01), clone 5B4 (Cat # H00007109-M01). GAPDH (36.1 kDa) used as specificity and loading control.



Western Blot detection against Immunogen (36.3 KDa) .

Specification

Product Description	Mouse monoclonal antibody raised against a partial recombinant TMEM1.
Immunogen	TMEM1 (NP_003265, 1162 a.a. ~ 1257 a.a) partial recombinant protein with GST tag. MW of the GST tag alone is 26 KDa.
Sequence	VRLFKYLPHSAHSSQLDADSWIENDSLSVDKHGDDQPDSSSLKSRGSVHSACSSEHKGLPMPRLQALPAGQVFNSSSGTQVLVIPSQDDHVLEVS
Host	Mouse
Reactivity	Human
Isotype	IgG1 Kappa
Quality Control Testing	Antibody Reactive Against Recombinant Protein. Western Blot detection against Immunogen (36.3 KDa) .
Storage Buffer	In 1x PBS, pH 7.4
Storage Instruction	Store at -20°C or lower. Aliquot to avoid repeated freezing and thawing.

Applications

- Western Blot (Cell lysate)

TMEM1 monoclonal antibody (M01), clone 5B4. Western Blot analysis of TRAPPC10 expression in Jurkat.

[Protocol Download](#)

- Western Blot (Transfected lysate)

Western Blot analysis of TMEM1 expression in transfected 293T cell line by TMEM1 monoclonal antibody (M01), clone 5B4.

Lane 1: TMEM1 transfected lysate(142.2 KDa).

Lane 2: Non-transfected lysate.

[Protocol Download](#)

- Western Blot (Recombinant protein)

[Protocol Download](#)

- ELISA

- RNAi Knockdown (Antibody validated)

Western blot analysis of TMEM1 over-expressed 293 cell line, cotransfected with TMEM1 Validated Chimera RNAi (Cat # H00007109-R01V) (Lane 2) or non-transfected control (Lane 1). Blot probed with TMEM1 monoclonal antibody (M01), clone 5B4 (Cat # H00007109-M01). GAPDH (36.1 kDa) used as specificity and loading control.

[Protocol Download](#)

Gene Info — TRAPPC10

Entrez GeneID [7109](#)

GeneBank Accession# [NM_003274](#)

Protein Accession# [NP_003265](#)

Gene Name TRAPPC10

Gene Alias EHOC-1, EHOC1, FLJ54223, FLJ54817, FLJ55683, GT334, MGC126777, TMEM1, TRS130, T RS30

Gene Description trafficking protein particle complex 10

Omim ID [602103](#)

Gene Ontology [Hyperlink](#)

Gene Summary The protein encoded by this gene is a transmembrane protein found in the cis-Golgi complex. The encoded protein is part of the multisubunit transport protein particle (TRAPP) complex and may be involved in vesicular transport from the endoplasmic reticulum to the Golgi. Mutations in this gene could be responsible for the Unverricht-Lundborg type of progressive myoclonus epilepsy, or for autoimmune polyglandular disease type 1. [provided by RefSeq]

Other Designations

TRAPP 130 kDa subunit|epilepsy holoprosencephaly candidate-1 protein|trafficking protein particle complex subunit 130|transmembrane protein 1|transport protein particle subunit TMEM1

Publication Reference

- [TRAPPC9 Mediates the Interaction between p150 and COPII Vesicles at the Target Membrane.](#)

Zong M, Satoh A, Yu MK, Siu KY, Ng WY, Chan HC, Tanner JA, Yu S.

PLoS One 2012 Jan; 7(1):e29995.

Application: WB-Tr, Human, COS, HEK293 cell

Disease

- [Genetic Predisposition to Disease](#)
- [Hyperparathyroidism](#)