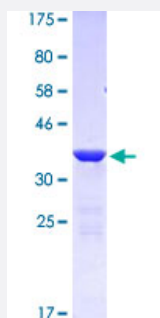


TLN1 (Human) Recombinant Protein (Q03)

Catalog # H00007094-Q03

Size 25 ug, 10 ug

Applications



Specification

Product Description	Human TLN1 partial ORF (AAH42923.1, 1324 a.a. - 1424 a.a.) recombinant protein with GST-tag at N-terminal.
Sequence	TDPAAPNLKSQLAAAAARAVTDSINQLITMCTQQAPGQKECDNALRELETVRELLENPVQPINDMSYFGCLDSVMENSKVLGEAMTGISQNAKNGNLPEFGD
Host	Wheat Germ (in vitro)
Theoretical MW (kDa)	36.74
Preparation Method	in vitro wheat germ expression system
Purification	Glutathione Sepharose 4 Fast Flow
Quality Control Testing	12.5% SDS-PAGE Stained with Coomassie Blue
Storage Buffer	50 mM Tris-HCl, 10 mM reduced Glutathione, pH=8.0 in the elution buffer.
Storage Instruction	Store at -80°C. Aliquot to avoid repeated freezing and thawing.
Note	Best use within three months from the date of receipt of this protein.

Applications

- Enzyme-linked Immunoabsorbent Assay
- Western Blot (Recombinant protein)
- Antibody Production
- Protein Array

Gene Info — TLN1

Entrez GeneID [7094](#)

GeneBank Accession# [BC042923](#)

Protein Accession# [AAH42923](#)

Gene Name TLN1

Gene Alias ILWEQ, KIAA1027, TLN

Gene Description talin 1

Omim ID [186745](#)

Gene Ontology [Hyperlink](#)

Gene Summary This gene encodes a cytoskeletal protein that is concentrated in areas of cell-substratum and cell-cell contacts. The encoded protein plays a significant role in the assembly of actin filaments and in spreading and migration of various cell types, including fibroblasts and osteoclasts. It codistributes with integrins in the cell surface membrane in order to assist in the attachment of adherent cells to extracellular matrices and of lymphocytes to other cells. The N-terminus of this protein contains elements for localization to cell-extracellular matrix junctions. The C-terminus contains binding sites for proteins such as beta-1-integrin, actin, and vinculin. [provided by RefSeq]

Other Designations -

Pathway

- [Focal adhesion](#)