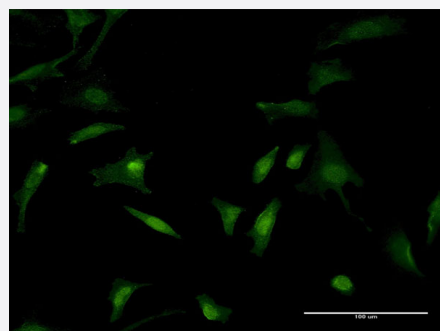


TLN1 monoclonal antibody (M19), clone 1A5

Catalog # H00007094-M19

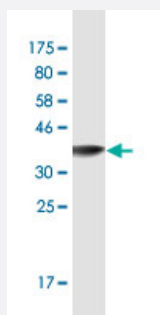
Size 100 ug

Applications



Immunofluorescence

Immunofluorescence of monoclonal antibody to TLN1 on HeLa cell . [antibody concentration 10 ug/ml]



Western Blot detection against Immunogen (36.74 KDa) .

Specification

Product Description	Mouse monoclonal antibody raised against a partial recombinant TLN1.
Immunogen	TLN1 (AAH42923, 1324 a.a. ~ 1424 a.a) partial recombinant protein with GST tag. MW of the GST tag alone is 26 KDa.
Sequence	TDPAAPNLKSQLAAAAARAVTDSINQLITMCTQQAPGQKECDNALRELETVRELLENPVQPINDMSYFGCLDSVMENSKVLGEAMTGISQNAKNGNLPEFGD
Host	Mouse
Reactivity	Human
Isotype	IgG2b Kappa

Quality Control Testing

Antibody Reactive Against Recombinant Protein.
Western Blot detection against Immunogen (36.74 KDa) .

Storage Buffer

In 1x PBS, pH 7.4

Storage Instruction

Store at -20°C or lower. Aliquot to avoid repeated freezing and thawing.

Applications

- Western Blot (Recombinant protein)

[Protocol Download](#)

- ELISA

- Immunofluorescence

Immunofluorescence of monoclonal antibody to TLN1 on HeLa cell . [antibody concentration 10 ug/ml]

Gene Info — TLN1

Entrez GeneID

[7094](#)

GeneBank Accession#

[BC042923](#)

Protein Accession#

[AAH42923](#)

Gene Name

TLN1

Gene Alias

ILWEQ, KIAA1027, TLN

Gene Description

talin 1

Omim ID

[186745](#)

Gene Ontology

[Hyperlink](#)

Gene Summary

This gene encodes a cytoskeletal protein that is concentrated in areas of cell-substratum and cell-cell contacts. The encoded protein plays a significant role in the assembly of actin filaments and in spreading and migration of various cell types, including fibroblasts and osteoclasts. It codistributes with integrins in the cell surface membrane in order to assist in the attachment of adherent cells to extracellular matrices and of lymphocytes to other cells. The N-terminus of this protein contains elements for localization to cell-extracellular matrix junctions. The C-terminus contains binding sites for proteins such as beta-1-integrin, actin, and vinculin. [provided by RefSeq]

Other Designations

-

Pathway

- [Focal adhesion](#)