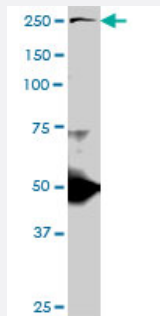


TLN1 monoclonal antibody (M06), clone 2E10

Catalog # H00007094-M06

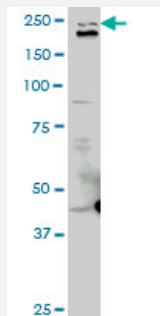
Size 100 ug

Applications



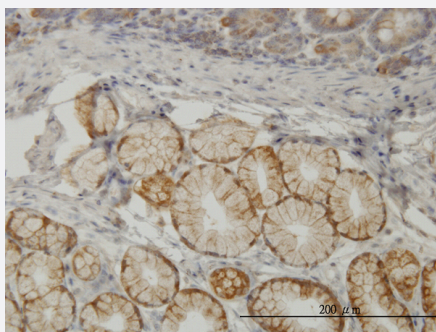
Western Blot (Cell lysate)

TLN1 monoclonal antibody (M06), clone 2E10. Western Blot analysis of TLN1 expression in PC-12 (Cat # L012V1).



Western Blot (Cell lysate)

TLN1 monoclonal antibody (M06), clone 2E10. Western Blot analysis of TLN1 expression in Raw 264.7.

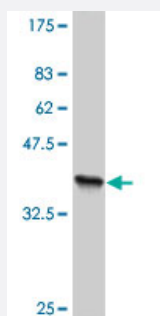
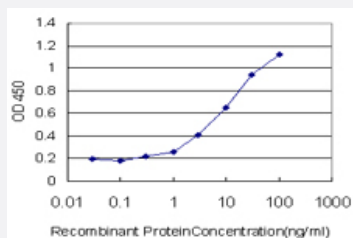


Immunohistochemistry (Formalin/PFA-fixed paraffin-embedded sections)

Immunoperoxidase of monoclonal antibody to TLN1 on formalin-fixed paraffin-embedded human small Intestine. [antibody concentration 3 ug/ml]

Sandwich ELISA (Recombinant protein)

Detection limit for recombinant GST tagged TLN1 is approximately 0.3ng/ml as a capture antibody.



Western Blot detection against Immunogen (36.52 KDa) .

Specification

Product Description	Mouse monoclonal antibody raised against a partial recombinant TLN1.
Immunogen	TLN1 (NP_006280, 1052 a.a. ~ 1149 a.a) partial recombinant protein with GST tag. MW of the GST tag alone is 26 KDa.
Sequence	SALSVVQNLEKDLQE VKAAARDGKLKPLPGETMEKCTQDLGNSTKAVSSAIAQLLGEVAQG NEN YAGIARDVAGGLRSLAQAARGVAALTSDPAVQA
Host	Mouse
Reactivity	Human, Mouse, Rat
Isotype	IgG3 Kappa
Quality Control Testing	Antibody Reactive Against Recombinant Protein. Western Blot detection against Immunogen (36.52 KDa) .
Storage Buffer	In 1x PBS, pH 7.4
Storage Instruction	Store at -20°C or lower. Aliquot to avoid repeated freezing and thawing.

Applications

- Western Blot (Cell lysate)

TLN1 monoclonal antibody (M06), clone 2E10. Western Blot analysis of TLN1 expression in PC-12 (Cat # L012V1).

[Protocol Download](#)

- Western Blot (Cell lysate)

TLN1 monoclonal antibody (M06), clone 2E10. Western Blot analysis of TLN1 expression in Raw 264.7.

[Protocol Download](#)

- Western Blot (Recombinant protein)

[Protocol Download](#)

- Immunohistochemistry (Formalin/PFA-fixed paraffin-embedded sections)

Immunoperoxidase of monoclonal antibody to TLN1 on formalin-fixed paraffin-embedded human small Intestine. [antibody concentration 3 ug/ml]

[Protocol Download](#)

- Sandwich ELISA (Recombinant protein)

Detection limit for recombinant GST tagged TLN1 is approximately 0.3ng/ml as a capture antibody.

[Protocol Download](#)

- ELISA

Gene Info — TLN1

Entrez GeneID	7094
---------------	----------------------

GeneBank Accession#	NM_006289
---------------------	---------------------------

Protein Accession#	NP_006280
--------------------	---------------------------

Gene Name	TLN1
-----------	------

Gene Alias	ILWEQ, KIAA1027, TLN
------------	----------------------

Gene Description	talin 1
------------------	---------

Omim ID	186745
---------	------------------------

Gene Ontology	Hyperlink
---------------	---------------------------

Gene Summary

This gene encodes a cytoskeletal protein that is concentrated in areas of cell-substratum and cell-cell contacts. The encoded protein plays a significant role in the assembly of actin filaments and in spreading and migration of various cell types, including fibroblasts and osteoclasts. It codistributes with integrins in the cell surface membrane in order to assist in the attachment of adherent cells to extracellular matrices and of lymphocytes to other cells. The N-terminus of this protein contains elements for localization to cell-extracellular matrix junctions. The C-terminus contains binding sites for proteins such as beta-1-integrin, actin, and vinculin. [provided by RefSeq]

Other Designations

-

Pathway

- [Focal adhesion](#)