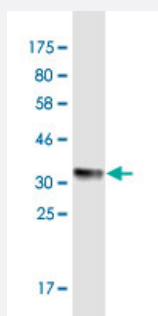


# TLN1 monoclonal antibody (M02), clone 5D1

Catalog # H00007094-M02

Size 100 ug

## Applications



Western Blot detection against Immunogen (36.52 KDa) .

## Specification

<b>Product Description</b>	Mouse monoclonal antibody raised against a partial recombinant TLN1.
<b>Immunogen</b>	TLN1 (NP_006280, 1052 a.a. ~ 1149 a.a) partial recombinant protein with GST tag. MW of the GST tag alone is 26 KDa.
<b>Sequence</b>	SALSVVQNLEKDLQEVKAAARDGKLKPLPGETMEKCTQDLGNSTKAVSSAIAQLLGEVAQGNEN YAGIAARDVAGGLRSLAQAARGVAALTSDPAVQA
<b>Host</b>	Mouse
<b>Reactivity</b>	Human
<b>Isotype</b>	IgG3 Kappa
<b>Quality Control Testing</b>	Antibody Reactive Against Recombinant Protein. Western Blot detection against Immunogen (36.52 KDa) .
<b>Storage Buffer</b>	In 1x PBS, pH 7.4
<b>Storage Instruction</b>	Store at -20°C or lower. Aliquot to avoid repeated freezing and thawing.

## Applications

- Western Blot (Recombinant protein)

[Protocol Download](#)

- ELISA

## Gene Info — TLN1

Entrez GeneID [7094](#)

GeneBank Accession# [NM\\_006289](#)

Protein Accession# [NP\\_006280](#)

Gene Name TLN1

Gene Alias ILWEQ, KIAA1027, TLN

Gene Description talin 1

Omim ID [186745](#)

Gene Ontology [Hyperlink](#)

### Gene Summary

This gene encodes a cytoskeletal protein that is concentrated in areas of cell-substratum and cell-cell contacts. The encoded protein plays a significant role in the assembly of actin filaments and in spreading and migration of various cell types, including fibroblasts and osteoclasts. It codistributes with integrins in the cell surface membrane in order to assist in the attachment of adherent cells to extracellular matrices and of lymphocytes to other cells. The N-terminus of this protein contains elements for localization to cell-extracellular matrix junctions. The C-terminus contains binding sites for proteins such as beta-1-integrin, actin, and vinculin. [provided by RefSeq]

Other Designations -

## Pathway

- [Focal adhesion](#)