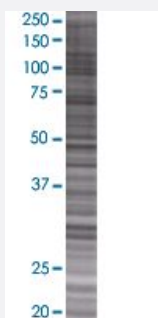


# TLL1 293T Cell Transient Overexpression Lysate(Denatured)

Catalog # H00007092-T01

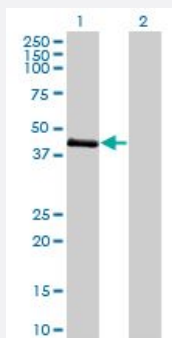
Size 100 uL

## Applications



### SDS-PAGE Gel

TLL1 transfected lysate.



### Western Blot

Lane 1: TLL1 transfected lysate ( 44.2 KDa)

Lane 2: Non-transfected lysate.

## Specification

Transfected Cell Line	293T
Plasmid	pCMV-TLL1 full-length
Host	Human
Theoretical MW (kDa)	44.2
Interspecies Antigen Sequence	Mouse (93); Rat (93)

**Quality Control Testing**

Transient overexpression cell lysate was tested with Anti-TLL1 antibody ([H00007092-B01](#)) by Western Blots.  
SDS-PAGE Gel  
TLL1 transfected lysate.  
Western Blot  
Lane 1: TLL1 transfected lysate ( 44.2 KDa)  
Lane 2: Non-transfected lysate.

**Storage Buffer**

1X Sample Buffer (50 mM Tris-HCl, 2% SDS, 10% glycerol, 300 mM 2-mercaptoethanol, 0.01% Bromophenol blue)

**Storage Instruction**

Store at -80°C. Aliquot to avoid repeated freezing and thawing.

## Applications

- Western Blot

## Gene Info — TLL1

**Entrez GeneID**[7092](#)**GeneBank Accession#**[BC016922](#)**Protein Accession#**[AAH16922](#)**Gene Name**

TLL1

**Gene Alias**

TLL

**Gene Description**

tolloid-like 1

**Omim ID**[606742](#)**Gene Ontology**[Hyperlink](#)**Gene Summary**

This gene encodes an astacin-like zinc-dependent metalloprotease and is a subfamily member of the metzincin family. A similar protein in mice is required during heart development and specifically processes procollagen C-propeptides and chordin at similar cleavage sites. [provided by RefSeq]

**Other Designations**

-

## Disease

- [Tobacco Use Disorder](#)