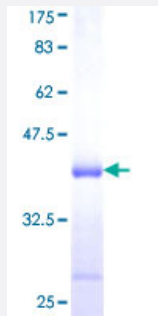


TIAL1 (Human) Recombinant Protein (Q01)

Catalog # H00007073-Q01

Size 25 ug, 10 ug

Applications



Specification

Product Description	Human TIAL1 partial ORF (NP_003243, 1 a.a. - 90 a.a.) recombinant protein with GST-tag at N-terminal.
Sequence	MMEDDGQPRTLTVGNLSRDVTEVLILQLFSQIGPCKSCKMITEHTSNDPYCFVEFYEHRDAAAAL AAMNGRKILGKEVKVNWATTPSSQK
Host	Wheat Germ (in vitro)
Theoretical MW (kDa)	35.64
Interspecies Antigen Sequence	Mouse (84); Rat (84)
Preparation Method	in vitro wheat germ expression system
Purification	Glutathione Sepharose 4 Fast Flow
Quality Control Testing	12.5% SDS-PAGE Stained with Coomassie Blue.
Storage Buffer	50 mM Tris-HCl, 10 mM reduced Glutathione, pH=8.0 in the elution buffer.
Storage Instruction	Store at -80°C. Aliquot to avoid repeated freezing and thawing.
Note	Best use within three months from the date of receipt of this protein.

Applications

- Enzyme-linked Immunoabsorbent Assay
- Western Blot (Recombinant protein)
- Antibody Production
- Protein Array

Gene Info — TIAL1

Entrez GeneID [7073](#)

GeneBank Accession# [NM_003252](#)

Protein Accession# [NP_003243](#)

Gene Name TIAL1

Gene Alias MGC33401, TCBP, TIAR

Gene Description TIA1 cytotoxic granule-associated RNA binding protein-like 1

Omim ID [603413](#)

Gene Ontology [Hyperlink](#)

Gene Summary The protein encoded by this gene is a member of a family of RNA-binding proteins, has three RNA recognition motifs (RRMs), and binds adenine and uridine-rich elements in mRNA and pre-mRNAs of a wide range of genes. It regulates various activities including translational control, splicing and apoptosis. Alternate transcriptional splice variants, encoding different isoforms, have been characterized. The different isoforms have been shown to function differently with respect to post-transcriptional silencing. [provided by RefSeq]

Other Designations OTTHUMP00000020602|OTTHUMP00000020605|T-cluster binding protein|TIA-1 related protein|TIA-1-related nucleolysin|TIA1 cytotoxic granule-associated RNA-binding protein-like 1|aging-associated gene 7 protein