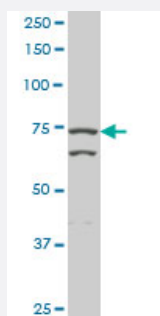


# TGM2 monoclonal antibody (M06), clone 1A6

Catalog # H00007052-M06

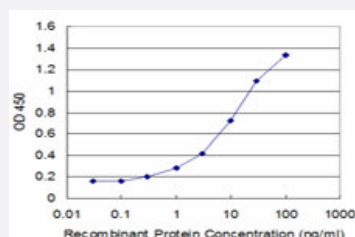
Size 100 ug

## Applications



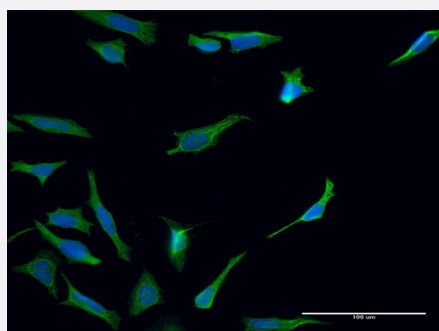
### Western Blot (Cell lysate)

TGM2 monoclonal antibody (M06), clone 1A6. Western Blot analysis of TGM2 expression in A-431 ( Cat # L015V1 ).



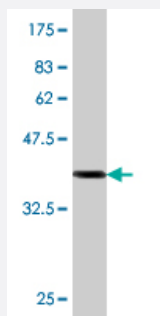
### Sandwich ELISA (Recombinant protein)

Detection limit for recombinant GST tagged TGM2 is approximately 0.3ng/ml as a capture antibody.



### Immunofluorescence

Immunofluorescence of monoclonal antibody to TGM2 on HeLa cell . [antibody concentration 10 ug/ml]



Western Blot detection against Immunogen (38.83 KDa) .

## Specification

<b>Product Description</b>	Mouse monoclonal antibody raised against a partial recombinant TGM2.
<b>Immunogen</b>	TGM2 (AAH03551, 1 a.a. ~ 120 a.a) partial recombinant protein with GST tag. MW of the GST tag alone is 26 KDa.
<b>Sequence</b>	MAEELVLERCDLELETNGRDHHTADLCREKLVVRRGQPFWLTLHFEGRNYEASVDSLTFSSVVTG PAPSQEAGTKARFPLRDAVEEGDWTATVVDQQDCTLSLQLTPANAPIGLYRLSLE
<b>Host</b>	Mouse
<b>Reactivity</b>	Human
<b>Isotype</b>	IgG2a Kappa
<b>Quality Control Testing</b>	Antibody Reactive Against Recombinant Protein. Western Blot detection against Immunogen (38.83 KDa) .
<b>Storage Buffer</b>	In 1x PBS, pH 7.4
<b>Storage Instruction</b>	Store at -20°C or lower. Aliquot to avoid repeated freezing and thawing.

## Applications

- Western Blot (Cell lysate)

TGM2 monoclonal antibody (M06), clone 1A6. Western Blot analysis of TGM2 expression in A-431 ( Cat # L015V1 ).

[Protocol Download](#)

- Western Blot (Recombinant protein)

[Protocol Download](#)

- Sandwich ELISA (Recombinant protein)

Detection limit for recombinant GST tagged TGM2 is approximately 0.3ng/ml as a capture antibody.

[Protocol Download](#)

- ELISA

- Immunofluorescence

Immunofluorescence of monoclonal antibody to TGM2 on HeLa cell . [antibody concentration 10 ug/ml]

## Gene Info — TGM2

Entrez GeneID [7052](#)

GeneBank Accession# [BC003551](#)

Protein Accession# [AAH03551](#)

Gene Name TGM2

Gene Alias G-ALPHA-h, GNAH, TG2, TGC

Gene Description transglutaminase 2 (C polypeptide, protein-glutamine-gamma-glutamyltransferase)

Omim ID [190196](#)

Gene Ontology [Hyperlink](#)

**Gene Summary** Transglutaminases are enzymes that catalyze the crosslinking of proteins by epsilon-gamma glutamyl lysine isopeptide bonds. While the primary structure of transglutaminases is not conserved, they all have the same amino acid sequence at their active sites and their activity is calcium-dependent. The protein encoded by this gene acts as a monomer, is induced by retinoic acid, and appears to be involved in apoptosis. Finally, the encoded protein is the autoantigen implicated in celiac disease. Two transcript variants encoding different isoforms have been found for this gene. [provided by RefSeq]

**Other Designations** C polypeptide|OTTHUMP00000030960|TGase C|TGase-H|protein-glutamine-gamma-glutamyltransferase|tissue transglutaminase|transglutaminase 2|transglutaminase C

## Disease

- [Celiac Disease](#)
- [Diabetes Mellitus](#)

- [Exfoliation Syndrome](#)
- [Genetic Predisposition to Disease](#)
- [Glaucoma](#)
- [Schizophrenia](#)