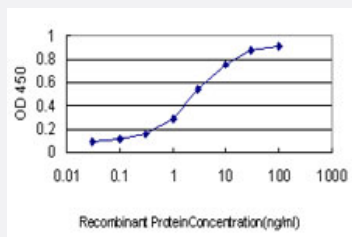


TGIF monoclonal antibody (M01), clone 1D12

Catalog # H00007050-M01

Size 100 ug

Applications



Sandwich ELISA (Recombinant protein)

Detection limit for recombinant GST tagged TGIF is approximately 0.1ng/ml as a capture antibody.

Specification

Product Description	Mouse monoclonal antibody raised against a partial recombinant TGIF.
Immunogen	TGIF (NP_003235, 163 a.a. ~ 272 a.a) partial recombinant protein with GST tag. MW of the GST tag alone is 26 KDa.
Sequence	PGSVLARPSVICHHTVTALKDVPFSLCQSVGVGQNTDIQQIAAKNFTDTSMLYPEDTCKSGPSTNT QSGLFNTPPPTPPDLNQDFSGFQLLV DVALKRAAEMELQAKLTA
Host	Mouse
Reactivity	Human
Interspecies Antigen Sequence	Mouse (89); Rat (85)
Isotype	IgG1 Kappa
Quality Control Testing	Antibody Reactive Against Recombinant Protein.
Storage Buffer	In 1x PBS, pH 7.4
Storage Instruction	Store at -20°C or lower. Aliquot to avoid repeated freezing and thawing.

Applications

- Sandwich ELISA (Recombinant protein)

Detection limit for recombinant GST tagged TGIF is approximately 0.1ng/ml as a capture antibody.

[Protocol Download](#)

- ELISA

Gene Info — TGIF1

Entrez GeneID [7050](#)

GeneBank Accession# [NM_003244](#)

Protein Accession# [NP_003235](#)

Gene Name TGIF1

Gene Alias HPE4, MGC39747, MGC5066, TGIF

Gene Description TGFB-induced factor homeobox 1

Omim ID [142946 602630 605389](#)

Gene Ontology [Hyperlink](#)

Gene Summary

The protein encoded by this gene is a member of the three-amino acid loop extension (TALE) superclass of atypical homeodomains. TALE homeobox proteins are highly conserved transcription regulators. This particular homeodomain binds to a previously characterized retinoid X receptor responsive element from the cellular retinol-binding protein II promoter. In addition to its role in inhibiting 9-cis-retinoic acid-dependent RXR alpha transcription activation of the retinoic acid responsive element, the protein is an active transcriptional co-repressor of SMAD2 and may participate in the transmission of nuclear signals during development and in the adult. Mutations in this gene are associated with holoprosencephaly type 4, which is a structural anomaly of the brain. Alternative splicing has been observed at this locus and eight variants, encoding four distinct isoforms, are described. [provided by RefSeq]

Other Designations 5'-TG-3' interacting factor|TALE homeobox TG-interacting factor|TG-interacting factor|homeobox protein TGIF|transforming growth factor-beta-induced factor

Disease

- [Cleft Lip](#)

- [Cleft Palate](#)
- [Myopia](#)