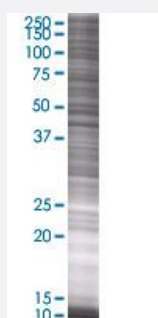


LEFTY2 293T Cell Transient Overexpression Lysate(Denatured)

Catalog # H00007044-T01

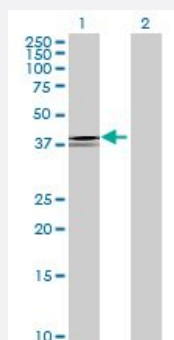
Size 100 uL

Applications



SDS-PAGE Gel

LEFTY2 transfected lysate.



Western Blot

Lane 1: LEFTY2 transfected lysate (40.37 KDa)

Lane 2: Non-transfected lysate.

Specification

Transfected Cell Line 293T

Plasmid pCMV-LEFTY2 full-length

Host Human

Theoretical MW (kDa) 40.37

Quality Control Testing Transient overexpression cell lysate was tested with Anti-LEFTY2 antibody ([H00007044-B01](#)) by Western Blots.
SDS-PAGE Gel
LEFTY2 transfected lysate.
Western Blot
Lane 1: LEFTY2 transfected lysate (40.37 KDa)
Lane 2: Non-transfected lysate.

Storage Buffer	1X Sample Buffer (50 mM Tris-HCl, 2% SDS, 10% glycerol, 300 mM 2-mercaptoethanol, 0.01% Bromophenol blue)
Storage Instruction	Store at -80°C. Aliquot to avoid repeated freezing and thawing.

Applications

- Western Blot

Gene Info — LEFTY2

Entrez GeneID	7044
GeneBank Accession#	NM_003240
Protein Accession#	NP_003231
Gene Name	LEFTY2
Gene Alias	EBAF, LEFTA, LEFTYA, MGC46222, TGFB4
Gene Description	left-right determination factor 2
Omim ID	601877
Gene Ontology	Hyperlink

Gene Summary	This gene encodes a member of the TGF-beta family of proteins. The encoded protein is secreted and plays a role in left-right asymmetry determination of organ systems during development. The protein may also play a role in endometrial bleeding. Mutations in this gene have been associated with left-right axis malformations, particularly in the heart and lungs. Some types of infertility have been associated with dysregulated expression of this gene in the endometrium. Alternative processing of this protein can yield three different products. This gene is closely linked to both a related family member and a related pseudogene. [provided by RefSeq]
--------------	--

Other Designations	OTTHUMP00000035570 endometrial bleeding associated factor endometrial bleeding associated factor (left-right determination, factor A; transforming growth factor beta superfamily) transforming growth factor, beta-4 (endometrial bleeding-associated factor;
--------------------	--

Pathway

- [TGF-beta signaling pathway](#)

Disease

- [Cleft Lip](#)
- [Cleft Palate](#)
- [Genetic Predisposition to Disease](#)
- [Obesity](#)
- [Ovarian Failure](#)
- [Polycystic Ovary Syndrome](#)
- [Puberty](#)
- [Thrombophilia](#)
- [Tobacco Use Disorder](#)