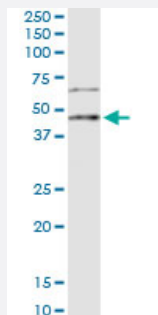


LEFTY2 (Human) IP-WB Antibody Pair

Catalog # H00007044-PW2

Size 1 Set

Applications



Immunoprecipitation of LEFTY2 transfected lysate using rabbit polyclonal anti-LEFTY2 and Protein A Magnetic Bead ([U0007](#)), and immunoblotted with mouse purified polyclonal anti-LEFTY2.

Specification

Product Description	This IP-WB antibody pair set comes with one antibody for immunoprecipitation and another to detect the precipitated protein in western blot.
Reactivity	Human
Quality Control Testing	Immunoprecipitation-Western Blot (IP-WB) Immunoprecipitation of LEFTY2 transfected lysate using rabbit polyclonal anti-LEFTY2 and Protein A Magnetic Bead (U0007), and immunoblotted with mouse purified polyclonal anti-LEFTY2.
Supplied Product	Antibody pair set content: 1. Antibody pair for IP: rabbit polyclonal anti-LEFTY2 (300 ul) 2. Antibody pair for WB: mouse purified polyclonal anti-LEFTY2 (50 ug)
Storage Instruction	Store reagents of the antibody pair set at -20°C or lower. Please aliquot to avoid repeated freeze thaw cycle. Reagents should be returned to -20°C storage immediately after use.

Applications

- Immunoprecipitation-Western Blot

[Protocol Download](#)

Gene Info — LEFTY2

Entrez GeneID [7044](#)

Gene Name LEFTY2

Gene Alias EBAF, LEFTA, LEFTYA, MGC46222, TGFB4

Gene Description left-right determination factor 2

Omim ID [601877](#)

Gene Ontology [Hyperlink](#)

Gene Summary This gene encodes a member of the TGF-beta family of proteins. The encoded protein is secreted and plays a role in left-right asymmetry determination of organ systems during development. The protein may also play a role in endometrial bleeding. Mutations in this gene have been associated with left-right axis malformations, particularly in the heart and lungs. Some types of infertility have been associated with dysregulated expression of this gene in the endometrium. Alternative processing of this protein can yield three different products. This gene is closely linked to both a related family member and a related pseudogene. [provided by RefSeq]

Other Designations OTTHUMP00000035570|endometrial bleeding associated factor|endometrial bleeding associated factor (left-right determination, factor A; transforming growth factor beta superfamily)|transforming growth factor, beta-4 (endometrial bleeding-associated factor;

Pathway

- [TGF-beta signaling pathway](#)

Disease

- [Cleft Lip](#)
- [Cleft Palate](#)
- [Genetic Predisposition to Disease](#)
- [Obesity](#)
- [Ovarian Failure](#)
- [Polycystic Ovary Syndrome](#)
- [Puberty](#)

- [Thrombophilia](#)
- [Tobacco Use Disorder](#)