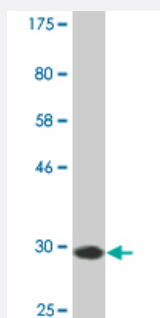


# TFF3 monoclonal antibody (M02A), clone 3G11

Catalog # H00007033-M02A

Size 200 uL

## Applications



Western Blot detection against Immunogen (32.23 KDa) .

## Specification

<b>Product Description</b>	Mouse monoclonal antibody raised against a full-length recombinant TFF3.
<b>Immunogen</b>	TFF3 (AAH17859.1, 15 a.a. ~ 73 a.a) full-length recombinant protein with GST tag. MW of the GST tag alone is 26 KDa.
<b>Sequence</b>	EEYVGLSANQCAVPAKDRVDCGYPHVTPKECNNRGCCFDSRIPGVPCFKPLQEAECTF
<b>Host</b>	Mouse
<b>Reactivity</b>	Human
<b>Interspecies Antigen Sequence</b>	Mouse (78); Rat (76)
<b>Isotype</b>	IgG1 Kappa
<b>Quality Control Testing</b>	Antibody Reactive Against Recombinant Protein. Western Blot detection against Immunogen (32.23 KDa) .
<b>Storage Buffer</b>	In ascites fluid
<b>Storage Instruction</b>	Store at -20°C or lower. Aliquot to avoid repeated freezing and thawing.

## Applications

- Western Blot (Recombinant protein)

[Protocol Download](#)

- ELISA

## Gene Info — TFF3

Entrez GeneID	<a href="#">7033</a>
GeneBank Accession#	<a href="#">BC017859</a>
Protein Accession#	<a href="#">AAH17859.1</a>
Gene Name	TFF3
Gene Alias	HITF, ITF, TFI, hP1.B
Gene Description	trefoil factor 3 (intestinal)
Omim ID	<a href="#">600633</a>
Gene Ontology	<a href="#">Hyperlink</a>
Gene Summary	Members of the trefoil family are characterized by having at least one copy of the trefoil motif, a 40 -amino acid domain that contains three conserved disulfides. They are stable secretory proteins expressed in gastrointestinal mucosa. Their functions are not defined, but they may protect the mucosa from insults, stabilize the mucus layer and affect healing of the epithelium. This gene is expressed in goblet cells of the intestines and colon. This gene and two other related trefoil family member genes are found in a cluster on chromosome 21. [provided by RefSeq]
Other Designations	intestinal trefoil factor secretory protein trefoil factor 3 trefoil factor 3, HITF, human intestinal trefoil factor

## Disease

- [Genetic Predisposition to Disease](#)
- [Lung Neoplasms](#)
- [Pulmonary Disease](#)

- [Urinary Bladder Neoplasms](#)
- [Werner syndrome](#)