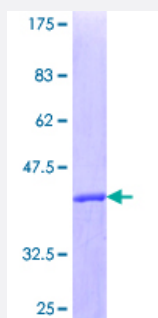


# TFDP1 (Human) Recombinant Protein (Q01)

Catalog # H00007027-Q01

Size 25 ug, 10 ug

## Applications



## Specification

<b>Product Description</b>	Human TFDP1 partial ORF ( NP_009042.1, 112 a.a. - 220 a.a.) recombinant protein with GST-tag at N-terminal.
<b>Sequence</b>	NGKGLRHFSMKVCEKVQRKGTTSYNEVADELVAEFSAADNHILPNESAYDQKNIRRRVYDALNVL MAMNISKEKKEIKWIGLPTNSAQECQNLEVERQRRLERIKQKQ
<b>Host</b>	Wheat Germ (in vitro)
<b>Theoretical MW (kDa)</b>	37.73
<b>Preparation Method</b>	<a href="#">in vitro wheat germ expression system</a>
<b>Purification</b>	Glutathione Sepharose 4 Fast Flow
<b>Quality Control Testing</b>	12.5% SDS-PAGE Stained with Coomassie Blue.
<b>Storage Buffer</b>	50 mM Tris-HCl, 10 mM reduced Glutathione, pH=8.0 in the elution buffer.
<b>Storage Instruction</b>	Store at -80°C. Aliquot to avoid repeated freezing and thawing.
<b>Note</b>	Best use within three months from the date of receipt of this protein.

## Applications

- Enzyme-linked Immunoabsorbent Assay
- Western Blot (Recombinant protein)
- Antibody Production
- Protein Array

## Gene Info — TFDP1

Entrez GeneID [7027](#)

GeneBank Accession# [NM\\_007111](#)

Protein Accession# [NP\\_009042.1](#)

Gene Name TFDP1

Gene Alias DP1, DRTF1, Dp-1

Gene Description transcription factor Dp-1

Omim ID [189902](#)

Gene Ontology [Hyperlink](#)

**Gene Summary** This gene encodes a member of a family of transcription factors that heterodimerize with E2F proteins to enhance their DNA-binding activity and promote transcription from E2F target genes. The encoded protein functions as part of this complex to control the transcriptional activity of numerous genes involved in cell cycle progression from G1 to S phase. Alternative splicing results in multiple transcript variants. Pseudogenes of this gene are found on chromosomes 1, 15, and X

**Other Designations** DRTF1-polypeptide 1|E2F dimerization partner 1|E2F-related transcription factor|OTTHUMP0000018765

## Pathway

- [Cell cycle](#)
- [TGF-beta signaling pathway](#)

## Disease

- [Genetic Predisposition to Disease](#)
- [Ovarian Neoplasms](#)
- [Tobacco Use Disorder](#)