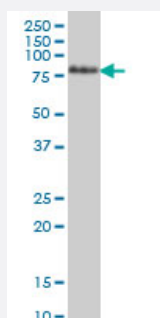


# TCF12 monoclonal antibody (M01), clone 2E9

Catalog # H00006938-M01

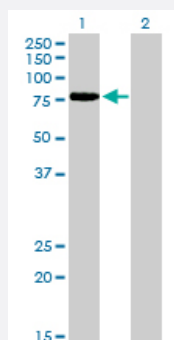
Size 100 ug

## Applications



### Western Blot (Cell lysate)

TCF12 monoclonal antibody (M01), clone 2E9 Western Blot analysis of TCF12 expression in Jurkat ( Cat # L017V1 ).

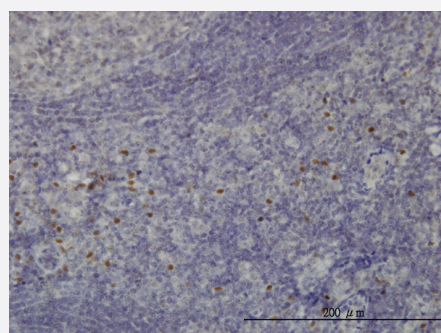


### Western Blot (Transfected lysate)

Western Blot analysis of TCF12 expression in transfected 293T cell line by TCF12 monoclonal antibody (M01), clone 2E9.

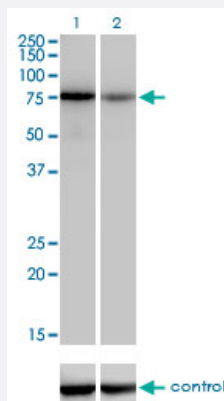
Lane 1: TCF12 transfected lysate(75.8 KDa).

Lane 2: Non-transfected lysate.



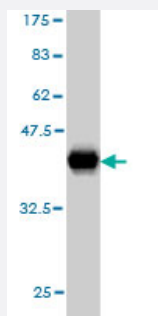
### Immunohistochemistry (Formalin/PFA-fixed paraffin-embedded sections)

Immunoperoxidase of monoclonal antibody to TCF12 on formalin-fixed paraffin-embedded human tonsil. [antibody concentration 1 ug/ml]



### RNAi Knockdown (Antibody validated)

Western blot analysis of TCF12 over-expressed 293 cell line, cotransfected with TCF12 Validated Chimera RNAi ( Cat # H00006938-R01V ) (Lane 2) or non-transfected control (Lane 1). Blot probed with TCF12 monoclonal antibody (M01), clone 2E9 (Cat # H00006938-M01 ). GAPDH ( 36.1 kDa ) used as specificity and loading control.



Western Blot detection against Immunogen (35.64 KDa) .

## Specification

<b>Product Description</b>	Mouse monoclonal antibody raised against a partial recombinant TCF12.
<b>Immunogen</b>	TCF12 (NP_996919, 364 a.a. ~ 453 a.a) partial recombinant protein with GST tag. MW of the GST tag alone is 26 KDa.
<b>Sequence</b>	VGSPSPLTGTSQWPRPGGQAPSSPSYENSLHSLKNRVEQQLHEHLQDAMSFLKDVCEQSRME DRLDRLDDAIHVLRNHAVGPSTSLPAGH
<b>Host</b>	Mouse
<b>Reactivity</b>	Human
<b>Interspecies Antigen Sequence</b>	Mouse (97); Rat (96)
<b>Isotype</b>	IgG2a Kappa
<b>Quality Control Testing</b>	Antibody Reactive Against Recombinant Protein. Western Blot detection against Immunogen (35.64 KDa) .
<b>Storage Buffer</b>	In 1x PBS, pH 7.4
<b>Storage Instruction</b>	Store at -20°C or lower. Aliquot to avoid repeated freezing and thawing.

## Applications

- Western Blot (Cell lysate)

TCF12 monoclonal antibody (M01), clone 2E9 Western Blot analysis of TCF12 expression in Jurkat ( Cat # L017V1 ).

[Protocol Download](#)

- Western Blot (Transfected lysate)

Western Blot analysis of TCF12 expression in transfected 293T cell line by TCF12 monoclonal antibody (M01), clone 2E9.

Lane 1: TCF12 transfected lysate(75.8 KDa).

Lane 2: Non-transfected lysate.

[Protocol Download](#)

- Western Blot (Recombinant protein)

[Protocol Download](#)

- Immunohistochemistry (Formalin/PFA-fixed paraffin-embedded sections)

Immunoperoxidase of monoclonal antibody to TCF12 on formalin-fixed paraffin-embedded human tonsil. [antibody concentration 1 ug/ml]

[Protocol Download](#)

- ELISA

- RNAi Knockdown (Antibody validated)

Western blot analysis of TCF12 over-expressed 293 cell line, cotransfected with TCF12 Validated Chimera RNAi ( Cat # H00006938-R01V ) (Lane 2) or non-transfected control (Lane 1). Blot probed with TCF12 monoclonal antibody (M01), clone 2E9 (Cat # H00006938-M01 ). GAPDH ( 36.1 kDa ) used as specificity and loading control.

[Protocol Download](#)

## Gene Info — TCF12

Entrez GeneID	<a href="#">6938</a>
GeneBank Accession#	<a href="#">NM_207036</a>
Protein Accession#	<a href="#">NP_996919</a>
Gene Name	TCF12

Gene Alias	HEB, HTF4, HsT17266, bHLHb20
Gene Description	transcription factor 12
Omim ID	<a href="#">600480</a>
Gene Ontology	<a href="#">Hyperlink</a>
Gene Summary	<p>The protein encoded by this gene is a member of the basic helix-loop-helix (bHLH) E-protein family that recognizes the consensus binding site (E-box) CANNTG. This encoded protein is expressed in many tissues, among them skeletal muscle, thymus, B- and T-cells, and may participate in regulating lineage-specific gene expression through the formation of heterodimers with other bHLH E-proteins. Several alternatively spliced transcript variants of this gene have been described, but the full-length nature of some of these variants has not been determined. [provided by RefSeq]</p>
Other Designations	helix-loop-helix transcription factor 4

## Disease

- [Genetic Predisposition to Disease](#)
- [Thyroid Neoplasms](#)
- [Tobacco Use Disorder](#)