

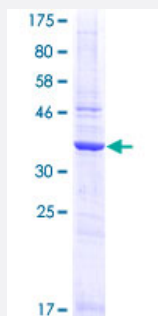
Full-Length

TCEB1 (Human) Recombinant Protein (P01)

Catalog # H00006921-P01

Size 25 ug, 10 ug

Applications



Specification

Product Description	Human TCEB1 full-length ORF (AAH13809, 1 a.a. - 112 a.a.) recombinant protein with GST-tag at N-terminal.
Sequence	MDGEEKTYGGCEGPDAMYVKLISSDGHEFVKREHALTSGTIKAMLSGPGQFAENETNEVNFREIP SHVLSKVCMYFTYKVRYSSTEIPEFPIAPEIALELLMAANFLDC
Host	Wheat Germ (in vitro)
Theoretical MW (kDa)	38.06
Preparation Method	in vitro wheat germ expression system
Purification	Glutathione Sepharose 4 Fast Flow
Quality Control Testing	12.5% SDS-PAGE Stained with Coomassie Blue.
Storage Buffer	50 mM Tris-HCl, 10 mM reduced Glutathione, pH=8.0 in the elution buffer.
Storage Instruction	Store at -80°C. Aliquot to avoid repeated freezing and thawing.
Note	Best use within three months from the date of receipt of this protein.

Applications

- Enzyme-linked Immunoabsorbent Assay
- Western Blot (Recombinant protein)
- Antibody Production
- Protein Array

Gene Info — TCEB1

Entrez GeneID [6921](#)

GeneBank Accession# [BC013809](#)

Protein Accession# [AAH13809](#)

Gene Name TCEB1

Gene Alias SIII

Gene Description transcription elongation factor B (SIII), polypeptide 1 (15kDa, elongin C)

Omim ID [600788](#)

Gene Ontology [Hyperlink](#)

Gene Summary This gene encodes the protein elongin C, which is a subunit of the transcription factor B (SIII) complex. The SIII complex is composed of elongins A/A2, B and C. It activates elongation by RNA polymerase II by suppressing transient pausing of the polymerase at many sites within transcription units. Elongin A functions as the transcriptionally active component of the SIII complex, whereas elongins B and C are regulatory subunits. Elongin A2 is specifically expressed in the testis, and capable of forming a stable complex with elongins B and C. The von Hippel-Lindau tumor suppressor protein binds to elongins B and C, and thereby inhibits transcription elongation. [provided by RefSeq]

Other Designations elongin C|transcription elongation factor B (SIII), polypeptide 1 (15kD, elongin C)|transcription elongation factor B, polypeptide 1

Pathway

- [Pathways in cancer](#)
- [Renal cell carcinoma](#)
- [Ubiquitin mediated proteolysis](#)

Disease

- [Tobacco Use Disorder](#)