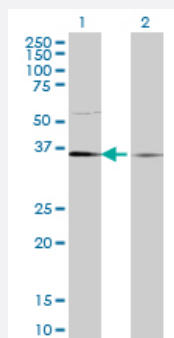


TCEA1 monoclonal antibody (M06), clone 1B7

Catalog # H00006917-M06

Size 100 ug

Applications

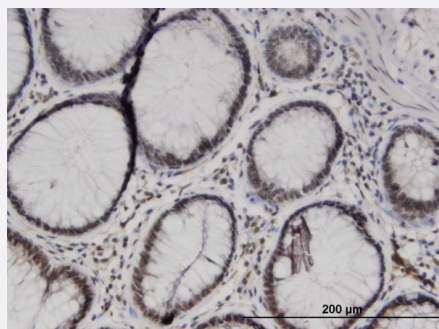


Western Blot (Transfected lysate)

Western Blot analysis of TCEA1 expression in transfected 293T cell line by TCEA1 monoclonal antibody (M06), clone 1B7.

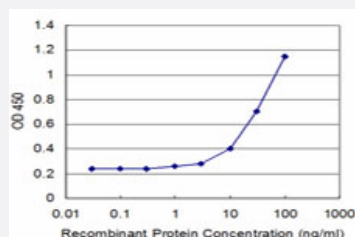
Lane 1: TCEA1 transfected lysate(34 KDa).

Lane 2: Non-transfected lysate.



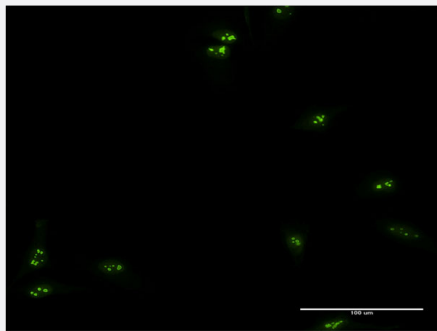
Immunohistochemistry (Formalin/PFA-fixed paraffin-embedded sections)

Immunoperoxidase of monoclonal antibody to TCEA1 on formalin-fixed paraffin-embedded human colon. [antibody concentration 3 ug/ml]



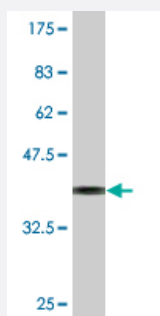
Sandwich ELISA (Recombinant protein)

Detection limit for recombinant GST tagged TCEA1 is approximately 1ng/ml as a capture antibody.



Immunofluorescence

Immunofluorescence of monoclonal antibody to TCEA1 on HeLa cell . [antibody concentration 10 ug/ml]



Western Blot detection against Immunogen (37.29 KDa) .

Specification

Product Description	Mouse monoclonal antibody raised against a partial recombinant TCEA1.
Immunogen	TCEA1 (NP_006747.1, 81 a.a. ~ 185 a.a) partial recombinant protein with GST tag. MW of the GST tag alone is 26 KDa.
Sequence	STEKDLDEKKKEPAITSQNSPEAREESTSSGNVSNRKDETNARDTYVSSFPRAPSTSDSVRLKC REMLAAALRTGDDYIAIGADEEELGSQIEEAIYQEIRNTDM
Host	Mouse
Reactivity	Human
Isotype	IgG2a Kappa
Quality Control Testing	Antibody Reactive Against Recombinant Protein. Western Blot detection against Immunogen (37.29 KDa) .
Storage Buffer	In 1x PBS, pH 7.4
Storage Instruction	Store at -20°C or lower. Aliquot to avoid repeated freezing and thawing.

Applications

- Western Blot (Transfected lysate)

Western Blot analysis of TCEA1 expression in transfected 293T cell line by TCEA1 monoclonal antibody (M06), clone 1B7.

Lane 1: TCEA1 transfected lysate(34 KDa).

Lane 2: Non-transfected lysate.

[Protocol Download](#)

- Western Blot (Recombinant protein)

[Protocol Download](#)

- Immunohistochemistry (Formalin/PFA-fixed paraffin-embedded sections)

Immunoperoxidase of monoclonal antibody to TCEA1 on formalin-fixed paraffin-embedded human colon. [antibody concentration 3 ug/ml]

[Protocol Download](#)

- Sandwich ELISA (Recombinant protein)

Detection limit for recombinant GST tagged TCEA1 is approximately 1 ng/ml as a capture antibody.

[Protocol Download](#)

- ELISA

- Immunofluorescence

Immunofluorescence of monoclonal antibody to TCEA1 on HeLa cell . [antibody concentration 10 ug/ml]

Gene Info — TCEA1

Entrez GeneID [6917](#)

GeneBank Accession# [NM_006756](#)

Protein Accession# [NP_006747.1](#)

Gene Name TCEA1

Gene Alias GTF2S, SII, TCEA, TF2S, TFIIIS

Gene Description transcription elongation factor A (SII), 1

Omim ID [601425](#)

Gene Ontology [Hyperlink](#)

Other Designationstranscription elongation factor A 1

Pathway

- [Basal transcription factors](#)