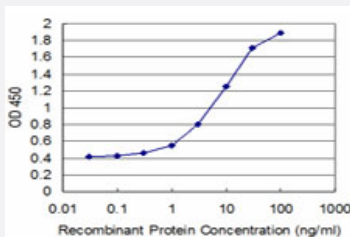


TBX6 monoclonal antibody (M09), clone 3F8

Catalog # H00006911-M09

Size 100 ug

Applications



Sandwich ELISA (Recombinant protein)

Detection limit for recombinant GST tagged TBX6 is approximately 0.3ng/ml as a capture antibody.

Specification

Product Description	Mouse monoclonal antibody raised against a partial recombinant TBX6.
Immunogen	TBX6 (NP_004599, 191 a.a. ~ 299 a.a) partial recombinant protein with GST tag. MW of the GST tag alone is 26 KDa.
Sequence	SFHRVKLTNSTLDPHGHLILHSMHKYQPRIHLVRAAQLCSQHWGGMASFRFPETTFISVTAYQNPQ ITQLKIAANPFAKGFRENGRNCKRERDARVKRKLRGPEPAATE
Host	Mouse
Reactivity	Human
Isotype	IgG2a Kappa
Quality Control Testing	Antibody Reactive Against Recombinant Protein.
Storage Buffer	In 1x PBS, pH 7.4
Storage Instruction	Store at -20°C or lower. Aliquot to avoid repeated freezing and thawing.

Applications

- Sandwich ELISA (Recombinant protein)

Detection limit for recombinant GST tagged TBX6 is approximately 0.3ng/ml as a capture antibody.

[Protocol Download](#)

- ELISA

Gene Info — TBX6

Entrez GeneID	6911
GeneBank Accession#	NM_004608
Protein Accession#	NP_004599
Gene Name	TBX6
Gene Alias	DFNB67
Gene Description	T-box 6
Omim ID	602427 610265
Gene Ontology	Hyperlink
Gene Summary	This gene is a member of a phylogenetically conserved family of genes that share a common DN A-binding domain, the T-box. T-box genes encode transcription factors involved in the regulation of developmental processes. Knockout studies in mice indicate that this gene is important for specification of paraxial mesoderm structures. [provided by RefSeq]
Other Designations	OTTHUMP00000162995

Disease

- [Genetic Predisposition to Disease](#)
- [Scoliosis](#)