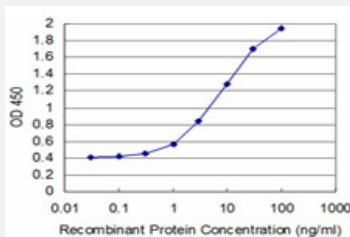


# TBX6 monoclonal antibody (M08), clone 3G9

Catalog # H00006911-M08

Size 100 ug

## Applications



### Sandwich ELISA (Recombinant protein)

Detection limit for recombinant GST tagged TBX6 is approximately 0.3ng/ml as a capture antibody.

## Specification

<b>Product Description</b>	Mouse monoclonal antibody raised against a partial recombinant TBX6.
<b>Immunogen</b>	TBX6 (NP_004599, 191 a.a. ~ 299 a.a) partial recombinant protein with GST tag. MW of the GST tag alone is 26 KDa.
<b>Sequence</b>	SFHRVKLTNSTLDPHGHLILHSMHKYQPRIHLVRAAQLCSQHWGGMASFRFPETTFISVTAYQNPQITQLKIAANPFAKGFRENGRNCKRERDARVKRKLRGPEPAATE
<b>Host</b>	Mouse
<b>Reactivity</b>	Human
<b>Isotype</b>	IgG2a Kappa
<b>Quality Control Testing</b>	Antibody Reactive Against Recombinant Protein.
<b>Storage Buffer</b>	In 1x PBS, pH 7.4
<b>Storage Instruction</b>	Store at -20°C or lower. Aliquot to avoid repeated freezing and thawing.

## Applications

- Sandwich ELISA (Recombinant protein)

Detection limit for recombinant GST tagged TBX6 is approximately 0.3ng/ml as a capture antibody.

[Protocol Download](#)

- ELISA

## Gene Info — TBX6

Entrez GeneID [6911](#)

GeneBank Accession# [NM\\_004608](#)

Protein Accession# [NP\\_004599](#)

Gene Name TBX6

Gene Alias DFNB67

Gene Description T-box 6

Omim ID [602427 610265](#)

Gene Ontology [Hyperlink](#)

**Gene Summary** This gene is a member of a phylogenetically conserved family of genes that share a common DN A-binding domain, the T-box. T-box genes encode transcription factors involved in the regulation of developmental processes. Knockout studies in mice indicate that this gene is important for specification of paraxial mesoderm structures. [provided by RefSeq]

**Other Designations** OTTHUMP00000162995

## Disease

- [Genetic Predisposition to Disease](#)
- [Scoliosis](#)