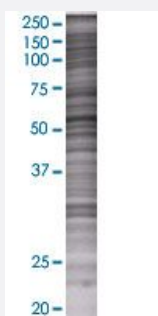


TBL1X 293T Cell Transient Overexpression Lysate(Denatured)

Catalog # H00006907-T01

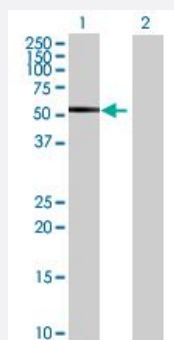
Size 100 uL

Applications



SDS-PAGE Gel

TBL1X transfected lysate.



Western Blot

Lane 1: TBL1X transfected lysate (57.97 KDa)

Lane 2: Non-transfected lysate.

Specification

Transfected Cell Line	293T
Plasmid	pCMV-TBL1X full-length
Host	Human
Theoretical MW (kDa)	57.97
Interspecies Antigen Sequence	Mouse (94); Rat (94)

Quality Control Testing

Transient overexpression cell lysate was tested with Anti-TBL1X antibody ([H00006907-B01](#)) by Western Blots.
SDS-PAGE Gel
TBL1X transfected lysate.
Western Blot
Lane 1: TBL1X transfected lysate (57.97 KDa)
Lane 2: Non-transfected lysate.

Storage Buffer

1X Sample Buffer (50 mM Tris-HCl, 2% SDS, 10% glycerol, 300 mM 2-mercaptoethanol, 0.01% Bromophenol blue)

Storage Instruction

Store at -80°C. Aliquot to avoid repeated freezing and thawing.

Applications

- Western Blot

Gene Info — TBL1X

Entrez GeneID[6907](#)**GeneBank Accession#**[BC032708.1](#)**Protein Accession#**[AAH32708.1](#)**Gene Name**

TBL1X

Gene Alias

EBI, SMAP55, TBL1

Gene Description

transducin (beta)-like 1X-linked

Omim ID[300196](#)**Gene Ontology**[Hyperlink](#)**Gene Summary**

The protein encoded by this gene has sequence similarity with members of the WD40 repeat-containing protein family. The WD40 group is a large family of proteins, which appear to have a regulatory function. It is believed that the WD40 repeats mediate protein-protein interactions and members of the family are involved in signal transduction, RNA processing, gene regulation, vesicular trafficking, cytoskeletal assembly and may play a role in the control of cytotypic differentiation. This encoded protein is found as a subunit in corepressor SMRT (silencing mediator for retinoid and thyroid receptors) complex along with histone deacetylase 3 protein. This gene is located adjacent to the ocular albinism gene and it is thought to be involved in the pathogenesis of the ocular albinism with late-onset sensorineural deafness phenotype. Four transcript variants encoding two different isoforms have been found for this gene. This gene is highly similar to the Y chromosome TBL1Y gene. [provided by RefSeq]

Other Designations

F-box-like/WD repeat-containing protein TBL1X|OTTHUMP00000022880|transducin beta-like 1X

Pathway

- [Wnt signaling pathway](#)