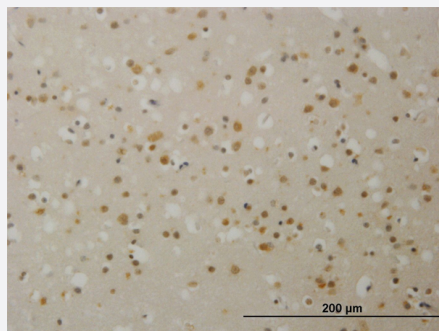


TBL1X monoclonal antibody (M07), clone 2B6

Catalog # H00006907-M07

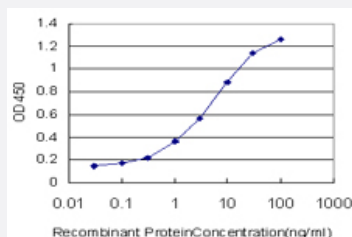
Size 100 ug

Applications



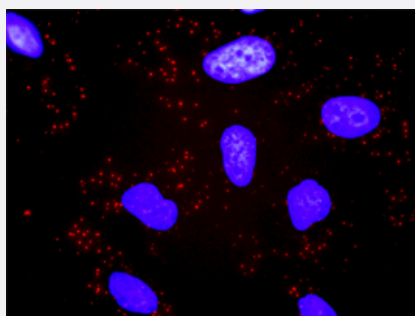
Immunohistochemistry (Formalin/PFA-fixed paraffin-embedded sections)

Immunoperoxidase of monoclonal antibody to TBL1X on formalin-fixed paraffin-embedded human cerebral cortex. [antibody concentration 1.5 ug/ml]



Sandwich ELISA (Recombinant protein)

Detection limit for recombinant GST tagged TBL1X is approximately 0.3ng/ml as a capture antibody.



In situ Proximity Ligation Assay (Cell)

Proximity Ligation Analysis of protein-protein interactions between CACYBP and TBL1X. HeLa cells were stained with anti-CACYBP rabbit purified polyclonal 1:1200 and anti-TBL1X mouse monoclonal antibody 1:50. Each red dot represents the detection of protein-protein interaction complex, and nuclei were counterstained with DAPI (blue).

Specification

Product Description

Mouse monoclonal antibody raised against a partial recombinant TBL1X.

Immunogen	TBL1X (NP_005638, 478 a.a. ~ 577 a.a) partial recombinant protein with GST tag. MW of the GST tag alone is 26 KDa.
Sequence	LASASFDSTVRLWDIERGVCTHTLTKHQEPVYSVAFSPDGKYLASGSFDKCVHWNTQSGNLVHSYRGTTGGIFEVCWNARGDKVGASASDGSVCVLDLRK
Host	Mouse
Reactivity	Human
Interspecies Antigen Sequence	Mouse (97); Rat (97)
Isotype	IgG2b Kappa
Quality Control Testing	Antibody Reactive Against Recombinant Protein.
Storage Buffer	In 1x PBS, pH 7.4
Storage Instruction	Store at -20°C or lower. Aliquot to avoid repeated freezing and thawing.

Applications

- Immunohistochemistry (Formalin/PFA-fixed paraffin-embedded sections)

Immunoperoxidase of monoclonal antibody to TBL1X on formalin-fixed paraffin-embedded human cerebral cortex. [antibody concentration 1.5 ug/ml]

[Protocol Download](#)

- Sandwich ELISA (Recombinant protein)

Detection limit for recombinant GST tagged TBL1X is approximately 0.3ng/ml as a capture antibody.

[Protocol Download](#)

- ELISA

- In situ* Proximity Ligation Assay (Cell)

Proximity Ligation Analysis of protein-protein interactions between CACYBP and TBL1X. HeLa cells were stained with anti-CACYBP rabbit purified polyclonal 1:1200 and anti-TBL1X mouse monoclonal antibody 1:50. Each red dot represents the detection of protein-protein interaction complex, and nuclei were counterstained with DAPI (blue).

Gene Info — TBL1X

Entrez GeneID [6907](#)

GeneBank Accession#	NM_005647
Protein Accession#	NP_005638
Gene Name	TBL1X
Gene Alias	EBI, SMAP55, TBL1
Gene Description	transducin (beta)-like 1X-linked
Omim ID	300196
Gene Ontology	Hyperlink
Gene Summary	<p>The protein encoded by this gene has sequence similarity with members of the WD40 repeat-containing protein family. The WD40 group is a large family of proteins, which appear to have a regulatory function. It is believed that the WD40 repeats mediate protein-protein interactions and members of the family are involved in signal transduction, RNA processing, gene regulation, vesicular trafficking, cytoskeletal assembly and may play a role in the control of cytotypic differentiation. This encoded protein is found as a subunit in corepressor SMRT (silencing mediator for retinoid and thyroid receptors) complex along with histone deacetylase 3 protein. This gene is located adjacent to the ocular albinism gene and it is thought to be involved in the pathogenesis of the ocular albinism with late-onset sensorineural deafness phenotype. Four transcript variants encoding two different isoforms have been found for this gene. This gene is highly similar to the Y chromosome TBL1Y gene. [provided by RefSeq]</p>
Other Designations	F-box-like/WD repeat-containing protein TBL1X OTTHUMP00000022880 transducin beta-like 1X

Pathway

- [Wnt signaling pathway](#)