

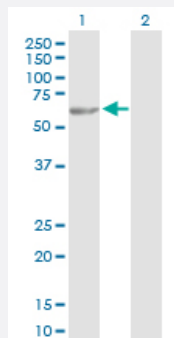
MaxPab®

TBL1X purified MaxPab rabbit polyclonal antibody (D01P)

Catalog # H00006907-D01P

Size 100 ug

Applications

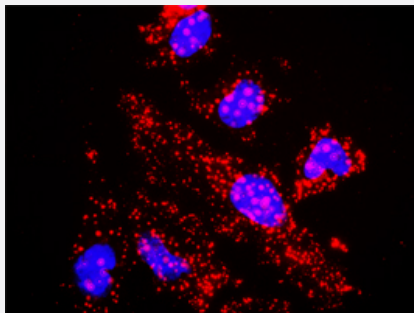


Western Blot (Transfected lysate)

Western Blot analysis of TBL1X expression in transfected 293T cell line ([H00006907-T03](#)) by TBL1X MaxPab polyclonal antibody.

Lane 1: TBL1X transfected lysate(57.00 KDa).

Lane 2: Non-transfected lysate.



In situ Proximity Ligation Assay (Cell)

Proximity Ligation Analysis of protein-protein interactions between TBL1X and CTNNB1. HeLa cells were stained with anti-TBL1X rabbit purified polyclonal 1:1200 and anti-CTNNB1 mouse monoclonal antibody 1:50. Each red dot represents the detection of protein-protein interaction complex, and nuclei were counterstained with DAPI (blue).

Specification

Product Description

Rabbit polyclonal antibody raised against a full-length human TBL1X protein.

Immunogen

TBL1X (AAH32708.1, 1 a.a. ~ 526 a.a) full-length human protein.

Sequence	MSITSDEVNFLVYRYLQESGFSSHAFTFGIESHISQSNINGTLVPPAALISILQKGLQYVEAEISINEDG TVFDGRPIESLSLIDAVMPDVVQTRQQAFREKLAQQQASAAAAAATAAATAATTTTSAAGVSHQN PSKNREATVNGEENRAHSVNNHAKPMEIDGEVEIPSSKATVLRGHESEVFCAWNPNVSDLLASG SGDSTARWNLNENSNGGSTQLVLRHCIREGGHDVPSNKDVTSLDWNTNGTLLATGSYDGFARM TEDGNLASTLGQHKGPFAKWNKGNILSAGVDKTTIWDAAHTGEAKQQFPFHSAPALDVDWQ NNTTFASCSTDMCIHVCR LGCDRPVKTFQGHTNEVNAIKWDPSGMLLASCSDDMTLKIWSMKQE VCIHDLQAHNKEIYTIKWSPTGPATSNPNSNIMLASASFDSTVRLWDIERGVCTHTLTKHQEPVYSV AFSPDGKYLASGSFDKCVHWNTQSGNLVHSYRGTGGIFVCWNARGDKVGASASDGSVCVLD LRK
Host	Rabbit
Reactivity	Human
Interspecies Antigen Sequence	Mouse (94); Rat (94)
Quality Control Testing	Antibody reactive against mammalian transfected lysate.
Storage Buffer	In 1x PBS, pH 7.4
Storage Instruction	Store at -20°C or lower. Aliquot to avoid repeated freezing and thawing.

Applications

- Western Blot (Transfected lysate)

Western Blot analysis of TBL1X expression in transfected 293T cell line ([H00006907-T03](#)) by TBL1X MaxPab polyclonal antibody.

Lane 1: TBL1X transfected lysate(57.00 KDa).

Lane 2: Non-transfected lysate.

[Protocol Download](#)

- In situ* Proximity Ligation Assay (Cell)

Proximity Ligation Analysis of protein-protein interactions between TBL1X and CTNNB1. HeLa cells were stained with anti-TBL1X rabbit purified polyclonal 1:1200 and anti-CTNNB1 mouse monoclonal antibody 1:50. Each red dot represents the detection of protein-protein interaction complex, and nuclei were counterstained with DAPI (blue).

Gene Info — TBL1X

Entrez GeneID	6907
GeneBank Accession#	BC032708.1
Protein Accession#	AAH32708.1

Gene Name	TBL1X
Gene Alias	EBI, SMAP55, TBL1
Gene Description	transducin (beta)-like 1X-linked
Omim ID	300196
Gene Ontology	Hyperlink
Gene Summary	<p>The protein encoded by this gene has sequence similarity with members of the WD40 repeat-containing protein family. The WD40 group is a large family of proteins, which appear to have a regulatory function. It is believed that the WD40 repeats mediate protein-protein interactions and members of the family are involved in signal transduction, RNA processing, gene regulation, vesicular trafficking, cytoskeletal assembly and may play a role in the control of cytotypic differentiation. This encoded protein is found as a subunit in corepressor SMRT (silencing mediator for retinoid and thyroid receptors) complex along with histone deacetylase 3 protein. This gene is located adjacent to the ocular albinism gene and it is thought to be involved in the pathogenesis of the ocular albinism with late-onset sensorineural deafness phenotype. Four transcript variants encoding two different isoforms have been found for this gene. This gene is highly similar to the Y chromosome TBL1Y gene. [provided by RefSeq]</p>
Other Designations	F-box-like/WD repeat-containing protein TBL1X OTTHUMP00000022880 transducin beta-like 1X

Pathway

- [Wnt signaling pathway](#)