

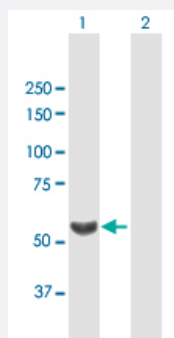
MaxPab®

# TBL1X purified MaxPab mouse polyclonal antibody (B01P)

Catalog # H00006907-B01P

Size 50 ug

## Applications

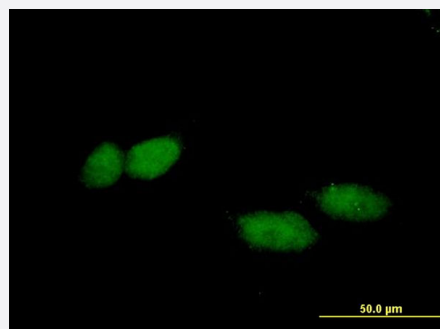


### Western Blot (Transfected lysate)

Western Blot analysis of TBL1X expression in transfected 293T cell line ([H00006907-T01](#)) by TBL1X MaxPab polyclonal antibody.

Lane 1: TBL1X transfected lysate(57.86 kDa).

Lane 2: Non-transfected lysate.



### Immunofluorescence

Immunofluorescence of purified MaxPab antibody to TBL1X on HeLa cell. [antibody concentration 10 ug/ml]

## Specification

### Product Description

Mouse polyclonal antibody raised against a full-length human TBL1X protein.

### Immunogen

TBL1X (AAH32708.1, 1 a.a. ~ 526 a.a) full-length human protein.

Sequence	MSITSDEVNFLVYRYLQESGFSHSAFTFGIESHISQSNINGTLVPPAALISILQKGLQYVEAEISINEDG TVFDGRPIESLSLIDAVMPDVVQTRQQAFREKLAQQQASAAAAAAATAAATAATTTTSAGVSHQN PSKNREATVNGEENRAHSVNNHAKPMEIDGEVEIPSSKATVLRGHESEVFCAWNPNVSDLLASG SGDSTARWNLNENSNGGSTQLVLRHCIREGGHDVPSNKDVTSLDWNTNGTLLATGSYDGFARM TEDGNLASTLGQHKGPIFALKWNRKGNLYLSAGVDKTTIWDAAHTGEAKQQFPFHSAPALDVDWQ NNTTFASCSTDMCIHVCRLGCDRPVKTFQGHTNEVNAIKWDPSGMLLASCSDMTLKWSMKQE VCIHDLQAHNKEIYTIKWSPTGPATSNPNSNIMLASASFSTVRLWDIERGVCTHTLTKHQEPVYSV AFSPDGKYLASGSFDKCVHWNTQSGNLVHSYRGTGGIFVCWNARGDKVGASASDGSVCVLD LRK
Host	Mouse
Reactivity	Human
Interspecies Antigen Sequence	Mouse (94); Rat (94)
Quality Control Testing	Antibody reactive against mammalian transfected lysate.
Storage Buffer	In 1x PBS, pH 7.4
Storage Instruction	Store at -20°C or lower. Aliquot to avoid repeated freezing and thawing.

## Applications

- Western Blot (Transfected lysate)

Western Blot analysis of TBL1X expression in transfected 293T cell line ([H00006907-T01](#)) by TBL1X MaxPab polyclonal antibody.

Lane 1: TBL1X transfected lysate(57.86 KDa).

Lane 2: Non-transfected lysate.

[Protocol Download](#)

- Immunofluorescence

Immunofluorescence of purified MaxPab antibody to TBL1X on HeLa cell. [antibody concentration 10 ug/ml]

## Gene Info — TBL1X

Entrez GeneID	<a href="#">6907</a>
GeneBank Accession#	<a href="#">BC032708.1</a>
Protein Accession#	<a href="#">AAH32708.1</a>
Gene Name	TBL1X

Gene Alias	EBI, SMAP55, TBL1
Gene Description	transducin (beta)-like 1X-linked
Omim ID	<a href="#">300196</a>
Gene Ontology	<a href="#">Hyperlink</a>
Gene Summary	<p>The protein encoded by this gene has sequence similarity with members of the WD40 repeat-containing protein family. The WD40 group is a large family of proteins, which appear to have a regulatory function. It is believed that the WD40 repeats mediate protein-protein interactions and members of the family are involved in signal transduction, RNA processing, gene regulation, vesicular trafficking, cytoskeletal assembly and may play a role in the control of cytotypic differentiation. This encoded protein is found as a subunit in corepressor SMRT (silencing mediator for retinoid and thyroid receptors) complex along with histone deacetylase 3 protein. This gene is located adjacent to the ocular albinism gene and it is thought to be involved in the pathogenesis of the ocular albinism with late-onset sensorineural deafness phenotype. Four transcript variants encoding two different isoforms have been found for this gene. This gene is highly similar to the Y chromosome TBL1Y gene. [provided by RefSeq]</p>
Other Designations	F-box-like/WD repeat-containing protein TBL1X OTTHUMP00000022880 transducin beta-like 1X

## Pathway

- [Wnt signaling pathway](#)