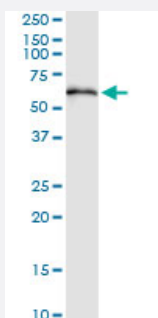


# TBCE (Human) IP-WB Antibody Pair

Catalog # H00006905-PW1

Size 1 Set

## Applications



Immunoprecipitation of TBCE transfected lysate using rabbit polyclonal anti-TBCE and Protein A Magnetic Bead ([U0007](#)), and immunoblotted with mouse purified polyclonal anti-TBCE.

## Specification

<b>Product Description</b>	This IP-WB antibody pair set comes with one antibody for immunoprecipitation and another to detect the precipitated protein in western blot.
<b>Reactivity</b>	Human
<b>Interspecies Antigen Sequence</b>	Mouse (74); Rat (75)
<b>Quality Control Testing</b>	Immunoprecipitation-Western Blot (IP-WB) Immunoprecipitation of TBCE transfected lysate using rabbit polyclonal anti-TBCE and Protein A Magnetic Bead ( <a href="#">U0007</a> ), and immunoblotted with mouse purified polyclonal anti-TBCE.
<b>Supplied Product</b>	Antibody pair set content: 1. Antibody pair for IP: rabbit polyclonal anti-TBCE (300 ul) 2. Antibody pair for WB: mouse purified polyclonal anti-TBCE (50 ug)
<b>Storage Instruction</b>	Store reagents of the antibody pair set at -20°C or lower. Please aliquot to avoid repeated freeze thaw cycle. Reagents should be returned to -20°C storage immediately after use.

## Applications

- Immunoprecipitation-Western Blot

[Protocol Download](#)

## Gene Info — TBCE

Entrez GeneID	<a href="#">6905</a>
Gene Name	TBCE
Gene Alias	HRD, KCS, KCS1, pac2
Gene Description	tubulin folding cofactor E
Omim ID	<a href="#">241410</a> <a href="#">244460</a> <a href="#">604934</a>
Gene Ontology	<a href="#">Hyperlink</a>
Gene Summary	Cofactor E is one of four proteins (cofactors A, D, E, and C) involved in the pathway leading to correctly folded beta-tubulin from folding intermediates. Cofactors A and D are believed to play a role in capturing and stabilizing beta-tubulin intermediates in a quasi-native confirmation. Cofactor E binds to the cofactor D/beta-tubulin complex; interaction with cofactor C then causes the release of beta-tubulin polypeptides that are committed to the native state. Two transcript variants encoding the same protein have been found for this gene. [provided by RefSeq]
Other Designations	OTTHUMP00000037906 beta-tubulin cofactor E tubulin-specific chaperone e

## Disease

- [Tobacco Use Disorder](#)