

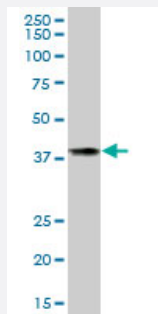
MaxPab®

TBCC purified MaxPab mouse polyclonal antibody (B01P)

Catalog # H00006903-B01P

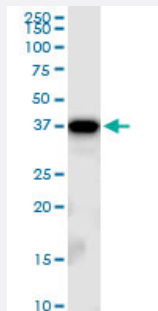
Size 50 ug

Applications



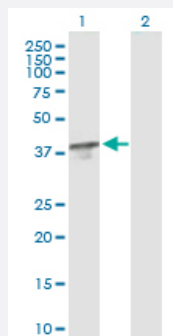
Western Blot (Tissue lysate)

TBCC MaxPab polyclonal antibody. Western Blot analysis of TBCC expression in human spleen.



Western Blot (Cell lysate)

TBCC MaxPab polyclonal antibody. Western Blot analysis of TBCC expression in HepG2.



Western Blot (Transfected lysate)

Western Blot analysis of TBCC expression in transfected 293T cell line ([H00006903-T01](#)) by TBCC MaxPab polyclonal antibody.

Lane 1: TBCC transfected lysate(38.06 KDa).

Lane 2: Non-transfected lysate.

Specification

Product Description

Mouse polyclonal antibody raised against a full-length human TBCC protein.

Immunogen	TBCC (NP_003183.1, 1 a.a. ~ 346 a.a) full-length human protein.
Sequence	MESVSCSAAAVRTGDMESQRDLVLPERLQRREQERQLEVERRKQKRQNEVEKENSFFVA TFARERAAVEELLERAESVERLEEAASRLQGLQKLINDSVFFLAAYDLRQGQEALARLQAALAER RRGLQPKKRFAFKTRGKDAASSTKVDAAPGIPPAVESIQDSPLPKKAEGDLGPSWVCGFSNLES QVLEKRASELHQRDVLLTELSNCTVRLYGNPNTLRRLTKAHSCKLLCGPVSTSVFLEDSCSDCVLAV ACQQLRIHSTKDTIFLQVTSRAIVEDCSGIQFAPYTWSYPEIDKDFESSGLDRSKNNWNDVDDFN WLARDMASPNWSILPEEERNIQWD
Host	Mouse
Reactivity	Human
Interspecies Antigen Sequence	Mouse (76); Rat (75)
Quality Control Testing	Antibody reactive against mammalian transfected lysate.
Storage Buffer	In 1x PBS, pH 7.4
Storage Instruction	Store at -20°C or lower. Aliquot to avoid repeated freezing and thawing.

Applications

- Western Blot (Tissue lysate)

TBCC MaxPab polyclonal antibody. Western Blot analysis of TBCC expression in human spleen.

[Protocol Download](#)

- Western Blot (Cell lysate)

TBCC MaxPab polyclonal antibody. Western Blot analysis of TBCC expression in HepG2.

[Protocol Download](#)

- Western Blot (Transfected lysate)

Western Blot analysis of TBCC expression in transfected 293T cell line ([H00006903-T01](#)) by TBCC MaxPab polyclonal antibody.

Lane 1: TBCC transfected lysate(38.06 KDa).

Lane 2: Non-transfected lysate.

[Protocol Download](#)

Gene Info — TBCC

Entrez GeneID	6903
GeneBank Accession#	NM_003192.1
Protein Accession#	NP_003183.1
Gene Name	TBCC
Gene Alias	CFC
Gene Description	tubulin folding cofactor C
Omim ID	602971
Gene Ontology	Hyperlink
Gene Summary	Cofactor C is one of four proteins (cofactors A, D, E, and C) involved in the pathway leading to correctly folded beta-tubulin from folding intermediates. Cofactors A and D are believed to play a role in capturing and stabilizing beta-tubulin intermediates in a quasi-native confirmation. Cofactor E binds to the cofactor D/beta-tubulin complex; interaction with cofactor C then causes the release of beta-tubulin polypeptides that are committed to the native state. [provided by RefSeq]
Other Designations	OTTHUMP00000016406 beta-tubulin cofactor C tubulin-specific chaperone c