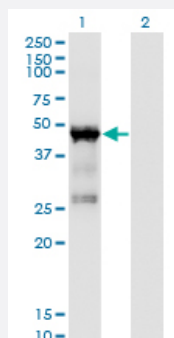


TARBP2 monoclonal antibody (M03), clone 1D9

Catalog # H00006895-M03

Size 100 ug

Applications

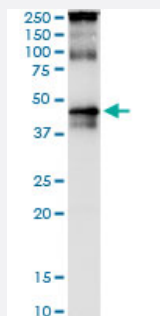


Western Blot (Transfected lysate)

Western Blot analysis of TARBP2 expression in transfected 293T cell line by TARBP2 monoclonal antibody (M03), clone 1D9.

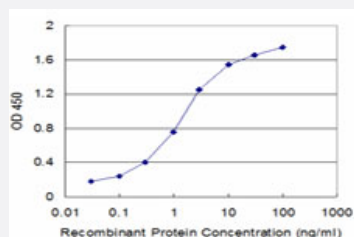
Lane 1: TARBP2 transfected lysate (Predicted MW: 39 KDa).

Lane 2: Non-transfected lysate.



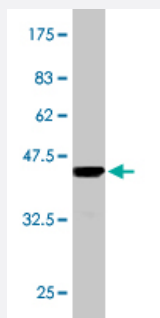
Immunoprecipitation

Immunoprecipitation of TARBP2 transfected lysate using anti-TARBP2 monoclonal antibody and Protein A Magnetic Bead, and immunoblotted with TARBP2 purified MaxPab rabbit polyclonal antibody.



Sandwich ELISA (Recombinant protein)

Detection limit for recombinant GST tagged TARBP2 is approximately 0.1ng/ml as a capture antibody.



Western Blot detection against Immunogen (37.84 KDa) .

Specification

Product Description	Mouse monoclonal antibody raised against a partial recombinant TARBP2.
Immunogen	TARBP2 (NP_599150, 141 a.a. ~ 250 a.a) partial recombinant protein with GST tag. MW of the GST tag alone is 26 KDa.
Sequence	RSPPMELQPPVSPQQSECNPVGALQELVVQKGWRLPEYTVTQESGPAHRKEFTMTCRVERFIEI GSGTSKKLAKRNAAAKMLLRVHTVPLDARDGNEVEPDDDHFSIGVG
Host	Mouse
Reactivity	Human
Isotype	IgG2a Kappa
Quality Control Testing	Antibody Reactive Against Recombinant Protein. Western Blot detection against Immunogen (37.84 KDa) .
Storage Buffer	In 1x PBS, pH 7.4
Storage Instruction	Store at -20°C or lower. Aliquot to avoid repeated freezing and thawing.

Applications

- Western Blot (Transfected lysate)

Western Blot analysis of TARBP2 expression in transfected 293T cell line by TARBP2 monoclonal antibody (M03), clone 1D9.

Lane 1: TARBP2 transfected lysate (Predicted MW: 39 KDa).

Lane 2: Non-transfected lysate.

[Protocol Download](#)

- Western Blot (Recombinant protein)

[Protocol Download](#)

- Immunoprecipitation

Immunoprecipitation of TARBP2 transfected lysate using anti-TARBP2 monoclonal antibody and Protein A Magnetic Bead, and immunoblotted with TARBP2 purified MaxPab rabbit polyclonal antibody.

[Protocol Download](#)

- Sandwich ELISA (Recombinant protein)

Detection limit for recombinant GST tagged TARBP2 is approximately 0.1ng/ml as a capture antibody.

[Protocol Download](#)

- ELISA

Gene Info — TARBP2

Entrez GeneID [6895](#)

GeneBank Accession# [NM_134323](#)

Protein Accession# [NP_599150](#)

Gene Name TARBP2

Gene Alias LOQS, TRBP, TRBP1, TRBP2

Gene Description TAR (HIV-1) RNA binding protein 2

Omim ID [605053](#)

Gene Ontology [Hyperlink](#)

Gene Summary HIV-1, the causative agent of acquired immunodeficiency syndrome (AIDS), contains an RNA genome that produces a chromosomally integrated DNA during the replicative cycle. Activation of HIV-1 gene expression by the transactivator Tat is dependent on an RNA regulatory element (TAR) located downstream of the transcription initiation site. The protein encoded by this gene binds between the bulge and the loop of the HIV-1 TAR RNA regulatory element and activates HIV-1 gene expression in synergy with the viral Tat protein. Alternative splicing results in multiple transcript variants encoding different isoforms. This gene also has a pseudogene. [provided by RefSeq]

Other Designations TAR (HIV) RNA binding protein 2|TAR (HIV) RNA-binding protein 2|TAR (HIV) RNA-binding protein TRBP1|TAR RNA binding protein 2|TAR RNA-binding protein 2|trans-activation responsive RNA-binding protein

Disease

- [Adenocarcinoma](#)
- [Carcinoma](#)
- [Esophageal Neoplasms](#)
- [Genetic Predisposition to Disease](#)
- [Kidney Neoplasms](#)
- [Neoplasm Recurrence](#)