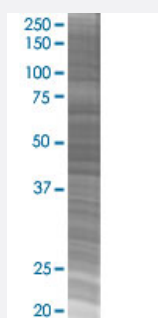


# MAP3K7 293T Cell Transient Overexpression Lysate(Denatured)

Catalog # H00006885-T02

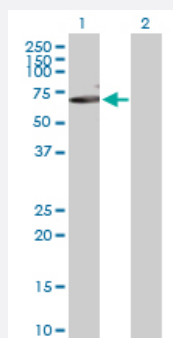
Size 100 uL

## Applications



### SDS-PAGE Gel

MAP3K7 transfected lysate.



### Western Blot

Lane 1: MAP3K7 transfected lysate ( 64.20 KDa)

Lane 2: Non-transfected lysate.

## Specification

**Transfected Cell Line** 293T

**Plasmid** pCMV-MAP3K7 full-length

**Host** Human

**Theoretical MW (kDa)** 64.2

**Quality Control Testing** Transient overexpression cell lysate was tested with Anti-MAP3K7 antibody ([H00006885-D01P](#)) by Western Blots.  
SDS-PAGE Gel  
MAP3K7 transfected lysate.  
Western Blot  
Lane 1: MAP3K7 transfected lysate ( 64.20 KDa)  
Lane 2: Non-transfected lysate.

**Storage Buffer**

1X Sample Buffer (50 mM Tris-HCl, 2% SDS, 10% glycerol, 300 mM 2-mercaptoethanol, 0.01% Bromophenol blue)

**Storage Instruction**

Store at -80°C. Aliquot to avoid repeated freezing and thawing.

## Applications

- Western Blot

## Gene Info — MAP3K7

**Entrez GeneID**[6885](#)**GeneBank Accession#**[NM\\_003188.2](#)**Protein Accession#**[NP\\_003179.1](#)**Gene Name**

MAP3K7

**Gene Alias**

TAK1, TGF1a

**Gene Description**

mitogen-activated protein kinase kinase kinase 7

**Omim ID**[602614](#)**Gene Ontology**[Hyperlink](#)**Gene Summary**

The protein encoded by this gene is a member of the serine/threonine protein kinase family. This kinase mediates the signaling transduction induced by TGF beta and morphogenetic protein (BMP), and controls a variety of cell functions including transcription regulation and apoptosis. In response to IL-1, this protein forms a kinase complex including TRAF6, MAP3K7P1/TAB1 and MAP3K7P2/TAB2; this complex is required for the activation of nuclear factor kappa B. This kinase can also activate MAPK8/JNK, MAP2K4/MKK4, and thus plays a role in the cell response to environmental stresses. Four alternatively spliced transcript variants encoding distinct isoforms have been reported. [provided by RefSeq]

**Other Designations**

OTTHUMP00000016870|OTTHUMP00000016871|OTTHUMP00000016872|OTTHUMP00000016873|TGF-beta activated kinase 1|transforming growth factor-beta-activated kinase 1

## Pathway

- [Adherens junction](#)
- [MAPK signaling pathway](#)

- [T cell receptor signaling pathway](#)
- [Toll-like receptor signaling pathway](#)
- [Wnt signaling pathway](#)

## Disease

- [Arthritis](#)
- [Crohn Disease](#)
- [Genetic Predisposition to Disease](#)
- [Inflammatory Bowel Diseases](#)
- [Narcolepsy](#)
- [Tobacco Use Disorder](#)