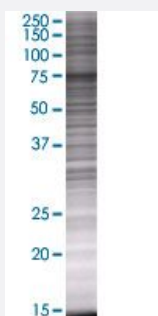


MAP3K7 293T Cell Transient Overexpression Lysate(Denatured)

Catalog # H00006885-T01

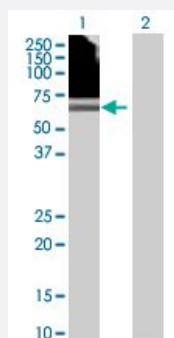
Size 100 uL

Applications



SDS-PAGE Gel

MAP3K7 transfected lysate.



Western Blot

Lane 1: MAP3K7 transfected lysate (63.8 KDa)

Lane 2: Non-transfected lysate.

Specification

Transfected Cell Line 293T

Plasmid pCMV-MAP3K7 full-length

Host Human

Theoretical MW (kDa) 63.8

Quality Control Testing Transient overexpression cell lysate was tested with Anti-MAP3K7 antibody ([H00006885-B01](#)) by Western Blots.
 SDS-PAGE Gel
 MAP3K7 transfected lysate.
 Western Blot
 Lane 1: MAP3K7 transfected lysate (63.8 KDa)
 Lane 2: Non-transfected lysate.

Storage Buffer

1X Sample Buffer (50 mM Tris-HCl, 2% SDS, 10% glycerol, 300 mM 2-mercaptoethanol, 0.01% Bromophenol blue)

Storage Instruction

Store at -80°C. Aliquot to avoid repeated freezing and thawing.

Applications

- Western Blot

Gene Info — MAP3K7

Entrez GeneID[6885](#)**GeneBank Accession#**[NM_003188.2](#)**Protein Accession#**[NP_003179.1](#)**Gene Name**

MAP3K7

Gene Alias

TAK1, TGF1a

Gene Description

mitogen-activated protein kinase kinase kinase 7

Omim ID[602614](#)**Gene Ontology**[Hyperlink](#)**Gene Summary**

The protein encoded by this gene is a member of the serine/threonine protein kinase family. This kinase mediates the signaling transduction induced by TGF beta and morphogenetic protein (BMP), and controls a variety of cell functions including transcription regulation and apoptosis. In response to IL-1, this protein forms a kinase complex including TRAF6, MAP3K7P1/TAB1 and MAP3K7P2/TAB2; this complex is required for the activation of nuclear factor kappa B. This kinase can also activate MAPK8/JNK, MAP2K4/MKK4, and thus plays a role in the cell response to environmental stresses. Four alternatively spliced transcript variants encoding distinct isoforms have been reported. [provided by RefSeq]

Other Designations

OTTHUMP00000016870|OTTHUMP00000016871|OTTHUMP00000016872|OTTHUMP00000016873|TGF-beta activated kinase 1|transforming growth factor-beta-activated kinase 1

Pathway

- [Adherens junction](#)
- [MAPK signaling pathway](#)

- [T cell receptor signaling pathway](#)
- [Toll-like receptor signaling pathway](#)
- [Wnt signaling pathway](#)

Disease

- [Arthritis](#)
- [Crohn Disease](#)
- [Genetic Predisposition to Disease](#)
- [Inflammatory Bowel Diseases](#)
- [Narcolepsy](#)
- [Tobacco Use Disorder](#)