

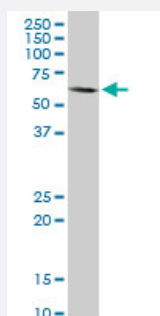
MaxPab®

MAP3K7 purified MaxPab rabbit polyclonal antibody (D01P)

Catalog # H00006885-D01P

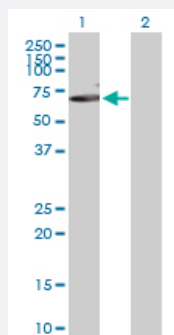
Size 100 ug

Applications



Western Blot (Cell lysate)

MAP3K7 MaxPab rabbit polyclonal antibody. Western Blot analysis of MAP3K7 expression in A-431.

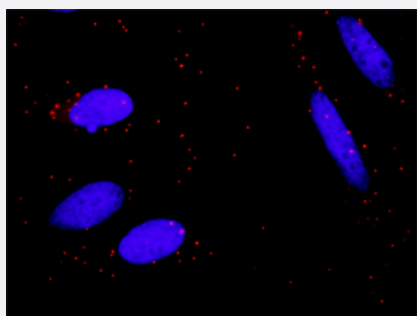


Western Blot (Transfected lysate)

Western Blot analysis of MAP3K7 expression in transfected 293T cell line ([H00006885-T02](#)) by MAP3K7 MaxPab polyclonal antibody.

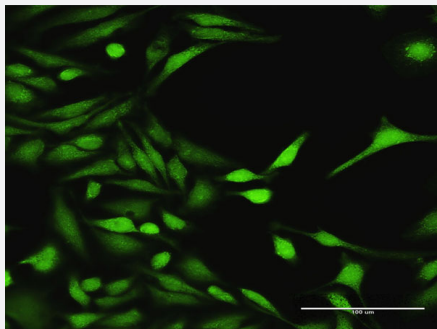
Lane 1: MAP3K7 transfected lysate(64.20 kDa).

Lane 2: Non-transfected lysate.



In situ Proximity Ligation Assay (Cell)

Proximity Ligation Analysis of protein-protein interactions between MAP3K7 and CHUK. HeLa cells were stained with anti-MAP3K7 rabbit purified polyclonal 1:1200 and anti-CHUK mouse monoclonal antibody 1:50. Each red dot represents the detection of protein-protein interaction complex, and nuclei were counterstained with DAPI (blue).



Immunofluorescence

Immunofluorescence of purified MaxPab antibody to MAP3K7 on HeLa cell.
[antibody concentration 30 ug/ml]

Specification

Product Description	Rabbit polyclonal antibody raised against a full-length human MAP3K7 protein.
Immunogen	MAP3K7 (NP_003179.1, 1 a.a. ~ 579 a.a) full-length human protein.
Sequence	MSTASAASSSSSSSAGEMIEAPSQVLNFEEIDYKEIEVEEVVGRGAFGVVCKAKWRAKDVAIKQI ESESERKAFIVELRQLSRVNHPIVVKLYGACLPVCLVMEYAEGGSLYNVLHGAELPYTAAHAM SWCLQCSQGVAYLHSMQPKALIHRLKPPNLLL VAGGTVLKICDFGTACDIQTHMTNNKGSAAW MAPEVFEGSNYSEKCDVFSWGILWEVITRRKPFDEIGGPAFRIMWAVHNGTRPPLIKNLPKPIESL MTRCWSKDPSQRPSMEEIVKIMTHLMRYFPGADEPLQYPCQYSDEGQSNSATSTGSFMDIASTN TSNKSDTNMEQVPATNDTIKRLSKLLKNQAKQQSESGRLSLGASRGSSVESLPPTSEGKRMSA DMSEIEARIAATTGNGQPRRRSIQDLTVTGTEPGQVSSRSSSPSVRMITSGPTSEKPTRSHPWTP DDSTDNNGSDNSIPMAYLTLDHQLQPLAPCPNSKESMAVFEQHCKMAQEYMKVQTEIALLLQRK QELVAELDQDEKDQQNTSRLVQEHLKLLDENKSLSTYYQQCKKQLEVIRSQQQKRQGTGTS
Host	Rabbit
Reactivity	Human
Quality Control Testing	Antibody reactive against mammalian transfected lysate.
Storage Buffer	In 1x PBS, pH 7.4
Storage Instruction	Store at -20°C or lower. Aliquot to avoid repeated freezing and thawing.

Applications

- Western Blot (Cell lysate)

MAP3K7 MaxPab rabbit polyclonal antibody. Western Blot analysis of MAP3K7 expression in A-431.

[Protocol Download](#)

- Western Blot (Transfected lysate)

Western Blot analysis of MAP3K7 expression in transfected 293T cell line ([H00006885-T02](#)) by MAP3K7 MaxPab polyclonal antibody.

Lane 1: MAP3K7 transfected lysate(64.20 KDa).

Lane 2: Non-transfected lysate.

[Protocol Download](#)

- In situ* Proximity Ligation Assay (Cell)

Proximity Ligation Analysis of protein-protein interactions between MAP3K7 and CHUK. HeLa cells were stained with anti-MAP3K7 rabbit purified polyclonal 1:1200 and anti-CHUK mouse monoclonal antibody 1:50. Each red dot represents the detection of protein-protein interaction complex, and nuclei were counterstained with DAPI (blue).

- Immunofluorescence

Immunofluorescence of purified MaxPab antibody to MAP3K7 on HeLa cell. [antibody concentration 30 ug/ml]

Gene Info — MAP3K7

Entrez GeneID [6885](#)

GeneBank Accession# [NM_003188.2](#)

Protein Accession# [NP_003179.1](#)

Gene Name MAP3K7

Gene Alias TAK1, TGF1a

Gene Description mitogen-activated protein kinase kinase kinase 7

Omim ID [602614](#)

Gene Ontology [Hyperlink](#)

Gene Summary The protein encoded by this gene is a member of the serine/threonine protein kinase family. This kinase mediates the signaling transduction induced by TGF beta and morphogenetic protein (BMP), and controls a variety of cell functions including transcription regulation and apoptosis. In response to IL-1, this protein forms a kinase complex including TRAF6, MAP3K7P1/TAB1 and MAP3K7P2/TAB2; this complex is required for the activation of nuclear factor kappa B. This kinase can also activate MAPK8/JNK, MAP2K4/MKK4, and thus plays a role in the cell response to environmental stresses. Four alternatively spliced transcript variants encoding distinct isoforms have been reported. [provided by RefSeq]

Other Designations OTTHUMP00000016870|OTTHUMP00000016871|OTTHUMP00000016872|OTTHUMP00000016873|TGF-beta activated kinase 1|transforming growth factor-beta-activated kinase 1

Pathway

- [Adherens junction](#)
- [MAPK signaling pathway](#)
- [T cell receptor signaling pathway](#)
- [Toll-like receptor signaling pathway](#)
- [Wnt signaling pathway](#)

Disease

- [Arthritis](#)
- [Crohn Disease](#)
- [Genetic Predisposition to Disease](#)
- [Inflammatory Bowel Diseases](#)
- [Narcolepsy](#)
- [Tobacco Use Disorder](#)