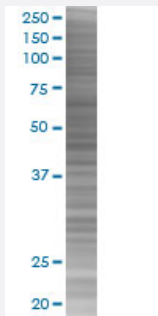


TAF13 293T Cell Transient Overexpression Lysate(Denatured)

Catalog # H00006884-T01

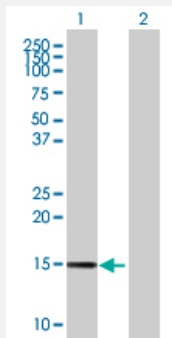
Size 100 uL

Applications



SDS-PAGE Gel

TAF13 transfected lysate.



Western Blot

Lane 1: TAF13 transfected lysate (14.3 KDa)

Lane 2: Non-transfected lysate.

Specification

Transfected Cell Line 293T

Plasmid pCMV-TAF13 full-length

Host Human

Theoretical MW (kDa) 14.3

Quality Control Testing Transient overexpression cell lysate was tested with Anti-TAF13 antibody ([H00006884-B01](#)) by Western Blots.
SDS-PAGE Gel
TAF13 transfected lysate.
Western Blot
Lane 1: TAF13 transfected lysate (14.3 KDa)
Lane 2: Non-transfected lysate.

Storage Buffer

1X Sample Buffer (50 mM Tris-HCl, 2% SDS, 10% glycerol, 300 mM 2-mercaptoethanol, 0.01% Bromophenol blue)

Storage Instruction

Store at -80°C. Aliquot to avoid repeated freezing and thawing.

Applications

- Western Blot

Gene Info — TAF13

Entrez GeneID[6884](#)**GeneBank Accession#**[NM_005645.3](#)**Protein Accession#**[-](#)**Gene Name**

TAF13

Gene Alias

MGC22425, TAF2K, TAFII18

Gene Description

TAF13 RNA polymerase II, TATA box binding protein (TBP)-associated factor, 18kDa

Omim ID[600774](#)**Gene Ontology**[Hyperlink](#)**Gene Summary**

Initiation of transcription by RNA polymerase II requires the activities of more than 70 polypeptides. The protein that coordinates these activities is transcription factor IID (TFIID), which binds to the core promoter to position the polymerase properly, serves as the scaffold for assembly of the remainder of the transcription complex, and acts as a channel for regulatory signals. TFIID is composed of the TATA-binding protein (TBP) and a group of evolutionarily conserved proteins known as TBP-associated factors or TAFs. TAFs may participate in basal transcription, serve as coactivators, function in promoter recognition or modify general transcription factors (GTFs) to facilitate complex assembly and transcription initiation. This gene encodes a small subunit associated with a subset of TFIID complexes. This subunit interacts with TBP and with two other small subunits of TFIID, TAF10 and TAF11. There is a pseudogene located on chromosome 6. [provided by RefSeq]

Other Designations

OTTHUMP00000039344|TATA box binding protein (TBP)-associated factor, RNA polymerase II, K, 18kD|TBP-associated factor 13|transcription initiation factor TFIID 18 kD subunit

Pathway

- [Basal transcription factors](#)