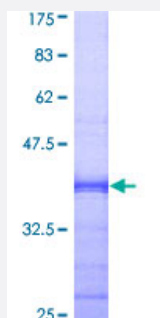


TAF12 (Human) Recombinant Protein (Q01)

Catalog # H00006883-Q01

Size 25 ug, 10 ug

Applications



Specification

Product Description	Human TAF12 partial ORF (AAH11986, 56 a.a. - 161 a.a.) recombinant protein with GST-tag at N-terminal.
Sequence	QVLTKKKLQDLVREVPNEQLDEDVEEMLLQIADDFIESVVTAAACQLARHRKSSTLEVKDVQLHLERQWNMWIPGFGSEEIRPYKKACTTEAHKQRMALIRKTTKK
Host	Wheat Germ (in vitro)
Theoretical MW (kDa)	37.29
Preparation Method	in vitro wheat germ expression system
Purification	Glutathione Sepharose 4 Fast Flow
Quality Control Testing	12.5% SDS-PAGE Stained with Coomassie Blue.
Storage Buffer	50 mM Tris-HCl, 10 mM reduced Glutathione, pH=8.0 in the elution buffer.
Storage Instruction	Store at -80°C. Aliquot to avoid repeated freezing and thawing.
Note	Best use within three months from the date of receipt of this protein.

Applications

- Enzyme-linked Immunoabsorbent Assay
- Western Blot (Recombinant protein)
- Antibody Production
- Protein Array

Gene Info — TAF12

Entrez GeneID	6883
GeneBank Accession#	BC011986
Protein Accession#	AAH11986
Gene Name	TAF12
Gene Alias	TAF2J, TAFII20
Gene Description	TAF12 RNA polymerase II, TATA box binding protein (TBP)-associated factor, 20kDa
Omim ID	600773
Gene Ontology	Hyperlink

Gene Summary

Control of transcription by RNA polymerase II involves the basal transcription machinery which is a collection of proteins. These proteins with RNA polymerase II, assemble into complexes which are modulated by transactivator proteins that bind to cis-regulatory elements located adjacent to the transcription start site. Some modulators interact directly with the basal complex, whereas others may act as bridging proteins linking transactivators to the basal transcription factors. Some of these associated factors are weakly attached while others are tightly associated with TBP in the TFIID complex. Among the latter are the TAF proteins. Different TAFs are predicted to mediate the function of distinct transcriptional activators for a variety of gene promoters and RNA polymerases. TAF12 interacts directly with TBP as well as with TAF2I. Two transcript variants encoding the same protein have been found for this gene. [provided by RefSeq]

Other Designations

OTTHUMP00000003785|OTTHUMP00000003786|TAF12 RNA polymerase II, TATA box binding protein (TBP)-associated factor, 20 kD|TATA box binding protein (TBP)-associated factor, RNA polymerase II, J, 20kD|transcription initiation factor TFIID 20/15 kDa subunits

Pathway

- [Basal transcription factors](#)