

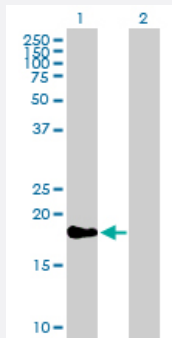
MaxPab®

TAF12 purified MaxPab mouse polyclonal antibody (B01P)

Catalog # H00006883-B01P

Size 50 ug

Applications

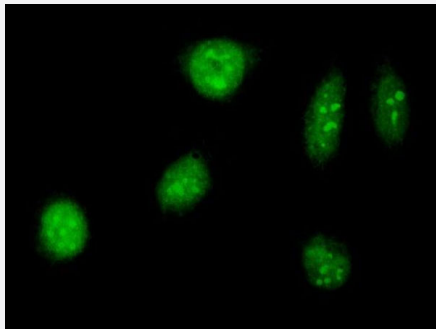


Western Blot (Transfected lysate)

Western Blot analysis of TAF12 expression in transfected 293T cell line ([H00006883-T01](#)) by TAF12 MaxPab polyclonal antibody.

Lane1:TAF12 transfected lysate(17.82 KDa).

Lane 2:Non-transfected lysate.



Immunofluorescence

Immunofluorescence of purified MaxPab antibody to TAF12 on HeLa cell.
[antibody concentration 10 ug/ml]

Specification

Product Description	Mouse polyclonal antibody raised against a full-length human TAF12 protein.
Immunogen	TAF12 (AAH11986, 1 a.a. ~ 161 a.a) full-length human protein.
Sequence	MNQFGPSALINLSNFSSIKPEPASTPPQGSMANSTAVVKIPGTPGAGGRLSPENNQVLTKKKLQD LVREVDPNELQDDEVEEMLLQIADDFIESVVTAAACQLARHRKSSTLEVKDVQLHLERQWNMWIP GFGSEEIRPYKKACTTEAHKQRMALIRKTTKK
Host	Mouse
Reactivity	Human

Quality Control Testing	Antibody reactive against mammalian transfected lysate.
Storage Buffer	In 1x PBS, pH 7.4
Storage Instruction	Store at -20°C or lower. Aliquot to avoid repeated freezing and thawing.

Applications

- Western Blot (Transfected lysate)

Western Blot analysis of TAF12 expression in transfected 293T cell line ([H00006883-T01](#)) by TAF12 MaxPab polyclonal antibody.

Lane1:TAF12 transfected lysate(17.82 KDa).

Lane 2:Non-transfected lysate.

[Protocol Download](#)

- Immunofluorescence

Immunofluorescence of purified MaxPab antibody to TAF12 on HeLa cell. [antibody concentration 10 ug/ml]

Gene Info — TAF12

Entrez GeneID	6883
GeneBank Accession#	BC011986
Protein Accession#	AAH11986
Gene Name	TAF12
Gene Alias	TAF2J, TAFII20
Gene Description	TAF12 RNA polymerase II, TATA box binding protein (TBP)-associated factor, 20kDa
Omim ID	600773
Gene Ontology	Hyperlink

Gene Summary

Control of transcription by RNA polymerase II involves the basal transcription machinery which is a collection of proteins. These proteins with RNA polymerase II, assemble into complexes which are modulated by transactivator proteins that bind to cis-regulatory elements located adjacent to the transcription start site. Some modulators interact directly with the basal complex, whereas others may act as bridging proteins linking transactivators to the basal transcription factors. Some of these associated factors are weakly attached while others are tightly associated with TBP in the TFIID complex. Among the latter are the TAF proteins. Different TAFs are predicted to mediate the function of distinct transcriptional activators for a variety of gene promoters and RNA polymerases. TAF12 interacts directly with TBP as well as with TAF21. Two transcript variants encoding the same protein have been found for this gene. [provided by RefSeq]

Other Designations

OTTHUMP00000003785|OTTHUMP00000003786|TAF12 RNA polymerase II, TATA box binding protein (TBP)-associated factor, 20 kD|TATA box binding protein (TBP)-associated factor, RNA polymerase II, J, 20kD|transcription initiation factor TFIID 20/15 kDa subunits

Pathway

- [Basal transcription factors](#)