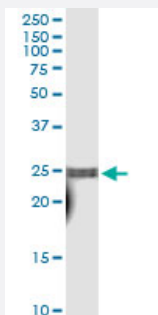


# TAF10 (Human) IP-WB Antibody Pair

Catalog # H00006881-PW1

Size 1 Set

## Applications



Immunoprecipitation of TAF10 transfected lysate using rabbit polyclonal anti-TAF10 and Protein A Magnetic Bead ([U0007](#)), and immunoblotted with mouse polyclonal anti-TAF10.

## Specification

<b>Product Description</b>	This IP-WB antibody pair set comes with one antibody for immunoprecipitation and another to detect the precipitated protein in western blot.
<b>Reactivity</b>	Human
<b>Interspecies Antigen Sequence</b>	Mouse (91); Rat (93)
<b>Quality Control Testing</b>	Immunoprecipitation-Western Blot (IP-WB) Immunoprecipitation of TAF10 transfected lysate using rabbit polyclonal anti-TAF10 and Protein A Magnetic Bead ( <a href="#">U0007</a> ), and immunoblotted with mouse polyclonal anti-TAF10.
<b>Supplied Product</b>	Antibody pair set content: 1. Antibody pair for IP: rabbit polyclonal anti-TAF10 (300 ul) 2. Antibody pair for WB: mouse polyclonal anti-TAF10 (50 ul)
<b>Storage Instruction</b>	Store reagents of the antibody pair set at -20°C or lower. Please aliquot to avoid repeated freeze thaw cycle. Reagents should be returned to -20°C storage immediately after use.

## Applications

- Immunoprecipitation-Western Blot

[Protocol Download](#)

## Gene Info — TAF10

**Entrez GeneID** [6881](#)

**Gene Name** TAF10

**Gene Alias** TAF2A, TAF2H, TAFI30

**Gene Description** TAF10 RNA polymerase II, TATA box binding protein (TBP)-associated factor, 30kDa

**Omim ID** [600475](#)

**Gene Ontology** [Hyperlink](#)

### Gene Summary

Initiation of transcription by RNA polymerase II requires the activities of more than 70 polypeptide s. The protein that coordinates these activities is transcription factor IID (TFIID), which binds to the core promoter to position the polymerase properly, serves as the scaffold for assembly of the remainder of the transcription complex, and acts as a channel for regulatory signals. TFIID is composed of the TATA-binding protein (TBP) and a group of evolutionarily conserved proteins known as TBP-associated factors or TAFs. TAFs may participate in basal transcription, serve as coactivators, function in promoter recognition or modify general transcription factors (GTFs) to facilitate complex assembly and transcription initiation. This gene encodes one of the small subunits of TFIID that is associated with a subset of TFIID complexes. Studies with human and mammalian cells have shown that this subunit is required for transcriptional activation by the estrogen receptor, for progression through the cell cycle, and may also be required for certain cellular differentiation programs . [provided by RefSeq

**Other Designations** TAF10 RNA polymerase II, TATA box binding protein (TBP)-associated factor, 30 kD|TATA box binding protein (TBP)-associated factor, RNA polymerase II, H, 30kD|TBP-related factor 10|transcription initiation factor TFIID 30 kD subunit

## Pathway

- [Basal transcription factors](#)