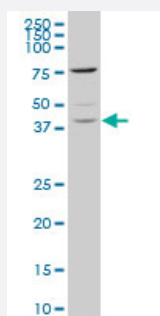


# TAF7 monoclonal antibody (M02), clone 3G6

Catalog # H00006879-M02

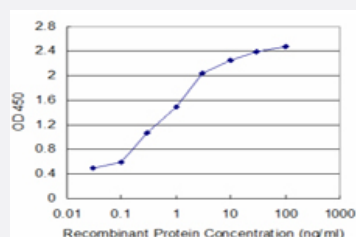
Size 100 ug

## Applications



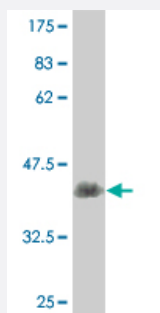
### Western Blot (Cell lysate)

TAF7 monoclonal antibody (M02), clone 3G6 Western Blot analysis of TAF7 expression in HeLa S3 NE ( Cat # L013V3 ).



### Sandwich ELISA (Recombinant protein)

Detection limit for recombinant GST tagged TAF7 is approximately 0.1ng/ml as a capture antibody.



Western Blot detection against Immunogen (36.08 KDa) .

## Specification

### Product Description

Mouse monoclonal antibody raised against a partial recombinant TAF7.

<b>Immunogen</b>	TAF7 (AAH32737, 130 a.a. ~ 224 a.a) partial recombinant protein with GST tag. MW of the GST tag alone is 26 KDa.
<b>Sequence</b>	FIWNHGITLPLKNVRKRRFRKTAKKKYIESPDVEKEVKRLLSTDAEAVSTRWEIIAEDETKEAENQG LDISSPGMSGHRQGHDSLEHDELREIFN
<b>Host</b>	Mouse
<b>Reactivity</b>	Human
<b>Isotype</b>	IgG2a Kappa
<b>Quality Control Testing</b>	Antibody Reactive Against Recombinant Protein. Western Blot detection against Immunogen (36.08 KDa) .
<b>Storage Buffer</b>	In 1x PBS, pH 7.4
<b>Storage Instruction</b>	Store at -20°C or lower. Aliquot to avoid repeated freezing and thawing.

## Applications

- Western Blot (Cell lysate)

TAF7 monoclonal antibody (M02), clone 3G6 Western Blot analysis of TAF7 expression in Hela S3 NE ( Cat # L013V3 ).

[Protocol Download](#)

- Western Blot (Recombinant protein)

[Protocol Download](#)

- Sandwich ELISA (Recombinant protein)

Detection limit for recombinant GST tagged TAF7 is approximately 0.1ng/ml as a capture antibody.

[Protocol Download](#)

- ELISA

## Gene Info — TAF7

<b>Entrez GeneID</b>	<a href="#">6879</a>
<b>GeneBank Accession#</b>	<a href="#">BC032737</a>
<b>Protein Accession#</b>	<a href="#">AAH32737</a>

Gene Name	TAF7
Gene Alias	TAF2F, TAFII55
Gene Description	TAF7 RNA polymerase II, TATA box binding protein (TBP)-associated factor, 55kDa
Omim ID	<a href="#">600573</a>
Gene Ontology	<a href="#">Hyperlink</a>
Gene Summary	<p>The intronless gene for this transcription coactivator is located between the protocadherin beta and gamma gene clusters on chromosome 5. The protein encoded by this gene is a component of the TFIID protein complex, a complex which binds to the TATA box in class II promoters and recruits RNA polymerase II and other factors. This particular subunit interacts with the largest TFIID subunit, as well as multiple transcription activators. The protein is required for transcription by promoters targeted by RNA polymerase II. [provided by RefSeq]</p>
Other Designations	OTTHUMP00000160028 TAF7 RNA polymerase II, TATA box binding protein (TBP)-associated factor, 55 kD TATA box binding protein (TBP)-associated factor, RNA polymerase II, F, 55kD TATA box-binding protein-associated factor 2F TBP-associated factor F transcription factor

## Pathway

- [Basal transcription factors](#)