

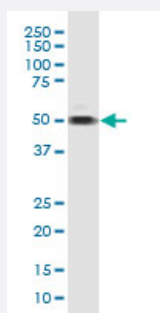
CX Grade

# TAF7 monoclonal antibody (M01J), clone 2C5

Catalog # H00006879-M01J

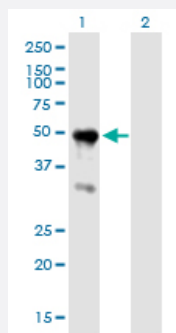
Size 100 ug

## Applications



### Western Blot (Cell lysate)

TAF7 monoclonal antibody (M01J), clone 2C5. Western Blot analysis of TAF7 expression in MCF-7.

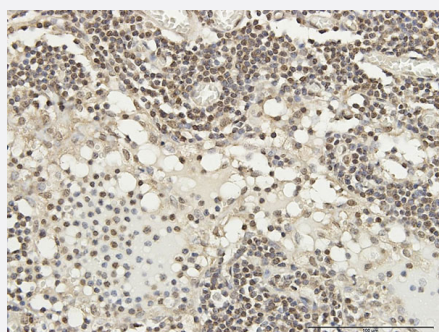


### Western Blot (Transfected lysate)

Western Blot analysis of TAF7 expression in transfected 293T cell line by TAF7 monoclonal antibody (M01J), clone 2C5.

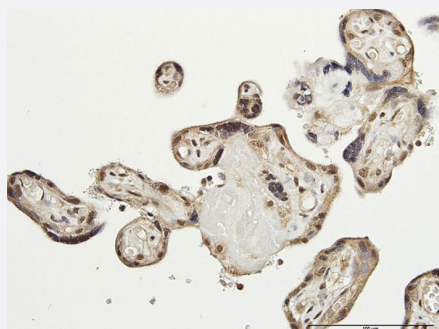
Lane 1: TAF7 transfected lysate (Predicted MW: 40.3 kDa).

Lane 2: Non-transfected lysate.



### Immunohistochemistry (Formalin/PFA-fixed paraffin-embedded sections)

Immunoperoxidase of monoclonal antibody to TAF7 on formalin-fixed paraffin-embedded human lymph node. [antibody concentration 3 ug/ml]

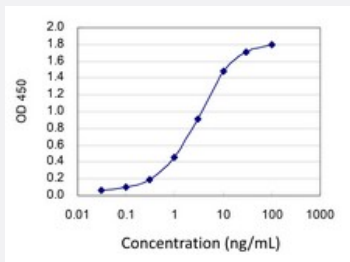


### Immunohistochemistry (Formalin/PFA-fixed paraffin-embedded sections)

Immunoperoxidase of monoclonal antibody to TAF7 on formalin-fixed paraffin-embedded human placenta. [antibody concentration 1 ug/ml]

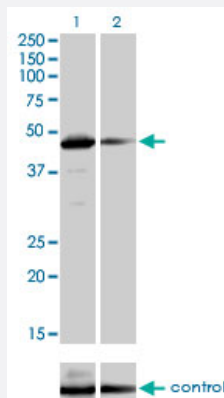
## Sandwich ELISA (Recombinant protein)

Detection limit for recombinant GST tagged TAF7 is 0.03 ng/ml as a capture antibody.



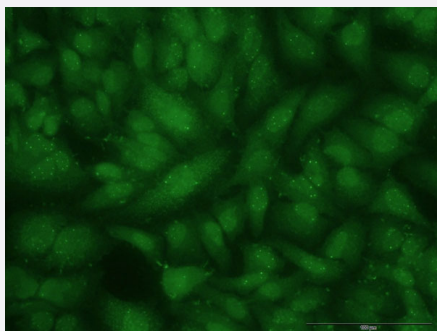
## RNAi Knockdown (Antibody validated)

Western blot analysis of TAF7 over-expressed 293 cell line, cotransfected with TAF7 Validated Chimera RNAi ( Cat # H00006879-R01V ) (Lane 2) or non-transfected control (Lane 1). Blot probed with TAF7 monoclonal antibody (M01), clone 2C5 (Cat # H00006879-M01 ). GAPDH ( 36.1 kDa ) used as specificity and loading control.

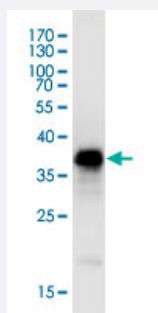


## Immunofluorescence

Immunofluorescence of monoclonal antibody to TAF7 on HeLa cell . [antibody concentration 10 ug/ml]



Western Blot detection against Immunogen (36.08 KDa) .



## Specification

### Product Description

Mouse monoclonal antibody raised against a partial recombinant TAF7.  
This product is belong to Cell Culture Grade Antibody (CX Grade).

|                                |  |
|--------------------------------|--|
| <b>Immunogen</b>               | TAF7 (AAH32737, 130 a.a. ~ 224 a.a) partial recombinant protein with GST tag. MW of the GST tag alone is 26 KDa. |
| <b>Sequence</b>                | FMVNHGITLPLKNVRKRRFRKTAKKKYIESPDVEKEVKRLLSTDAEAVSTRWEIIAEDETKEAENQG<br>LDISSPGMSGHRQGHDSLEHDELREIFN              |
| <b>Host</b>                    | Mouse  |
| <b>Reactivity</b>              | Human  |
| <b>Preparation Method</b>      | Cell Culture Production  |
| <b>Isotype</b>                 | IgG2a Kappa  |
| <b>Quality Control Testing</b> | Antibody Reactive Against Recombinant Protein.<br>Western Blot detection against Immunogen (36.08 KDa) .         |
| <b>Storage Buffer</b>          | In 1x PBS, pH 7.4  |
| <b>Storage Instruction</b>     | Store at -20°C or lower. Aliquot to avoid repeated freezing and thawing.   |

## Applications

- Western Blot (Cell lysate)

TAF7 monoclonal antibody (M01J), clone 2C5. Western Blot analysis of TAF7 expression in MCF-7.

[Protocol Download](#)

- Western Blot (Transfected lysate)

Western Blot analysis of TAF7 expression in transfected 293T cell line by TAF7 monoclonal antibody (M01J), clone 2C5.

Lane 1: TAF7 transfected lysate (Predicted MW: 40.3 KDa).

Lane 2: Non-transfected lysate.

[Protocol Download](#)

- Western Blot (Recombinant protein)

[Protocol Download](#)

- Immunohistochemistry (Formalin/PFA-fixed paraffin-embedded sections)

Immunoperoxidase of monoclonal antibody to TAF7 on formalin-fixed paraffin-embedded human lymph node. [antibody concentration 3 ug/ml]

[Protocol Download](#)

- Immunohistochemistry (Formalin/PFA-fixed paraffin-embedded sections)

Immunoperoxidase of monoclonal antibody to TAF7 on formalin-fixed paraffin-embedded human placenta. [antibody concentration 1 ug/ml]

[Protocol Download](#)

- Sandwich ELISA (Recombinant protein)

Detection limit for recombinant GST tagged TAF7 is 0.03 ng/ml as a capture antibody.

[Protocol Download](#)

- ELISA

- RNAi Knockdown (Antibody validated)

Western blot analysis of TAF7 over-expressed 293 cell line, cotransfected with TAF7 Validated Chimera RNAi ( Cat # H00006879-R01V ) (Lane 2) or non-transfected control (Lane 1). Blot probed with TAF7 monoclonal antibody (M01), clone 2C5 (Cat # H00006879-M01 ). GAPDH ( 36.1 kDa ) used as specificity and loading control.

[Protocol Download](#)

- Immunofluorescence

Immunofluorescence of monoclonal antibody to TAF7 on HeLa cell . [antibody concentration 10 ug/ml]

## Gene Info — TAF7

Entrez GeneID [6879](#)

GeneBank Accession# [BC032737](#)

Protein Accession# [AAH32737](#)

Gene Name TAF7

Gene Alias TAF2F, TAFII55

Gene Description TAF7 RNA polymerase II, TATA box binding protein (TBP)-associated factor, 55kDa

Omim ID [600573](#)

Gene Ontology [Hyperlink](#)

**Gene Summary**

The intronless gene for this transcription coactivator is located between the protocadherin beta and gamma gene clusters on chromosome 5. The protein encoded by this gene is a component of the TFIID protein complex, a complex which binds to the TATA box in class II promoters and recruits RNA polymerase II and other factors. This particular subunit interacts with the largest TFIID subunit, as well as multiple transcription activators. The protein is required for transcription by promoters targeted by RNA polymerase II. [provided by RefSeq]

**Other Designations**

OTTHUMP00000160028|TAF7 RNA polymerase II, TATA box binding protein (TBP)-associated factor, 55 kD|TATA box binding protein (TBP)-associated factor, RNA polymerase II, F, 55kD|TATA box-binding protein-associated factor 2F|TBP-associated factor F|transcription

**Pathway**

- [Basal transcription factors](#)