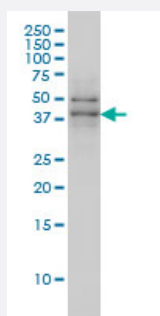


# TAF7 monoclonal antibody (M01), clone 2C5

Catalog # H00006879-M01

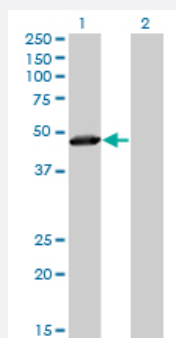
Size 100 ug

## Applications



### Western Blot (Cell lysate)

TAF7 monoclonal antibody (M01), clone 2C5 Western Blot analysis of TAF7 expression in MCF-7 ( Cat # L046V1 ).

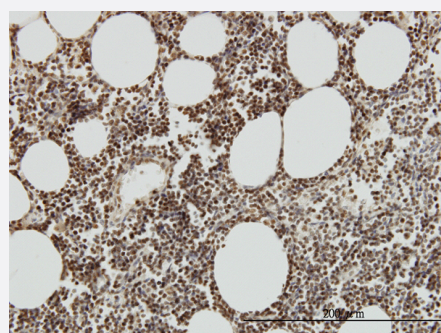


### Western Blot (Transfected lysate)

Western Blot analysis of TAF7 expression in transfected 293T cell line by TAF7 monoclonal antibody (M01), clone 2C5.

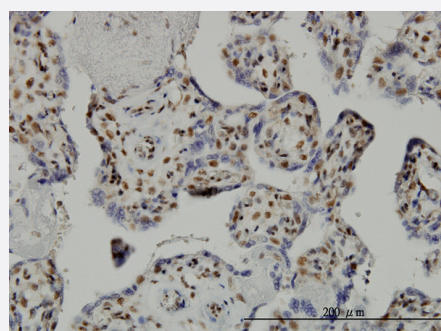
Lane 1: TAF7 transfected lysate(40.3 KDa).

Lane 2: Non-transfected lysate.



### Immunohistochemistry (Formalin/PFA-fixed paraffin-embedded sections)

Immunoperoxidase of monoclonal antibody to TAF7 on formalin-fixed paraffin-embedded human lymph node. [antibody concentration 3 ug/ml]

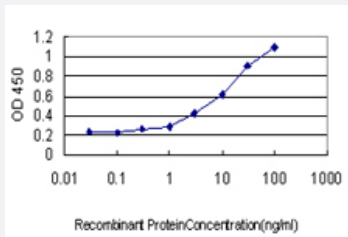


### Immunohistochemistry (Formalin/PFA-fixed paraffin-embedded sections)

Immunoperoxidase of monoclonal antibody to TAF7 on formalin-fixed paraffin-embedded human placenta. [antibody concentration 1 ug/ml]

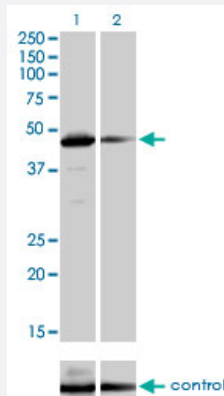
## Sandwich ELISA (Recombinant protein)

Detection limit for recombinant GST tagged TAF7 is approximately 0.3ng/ml as a capture antibody.



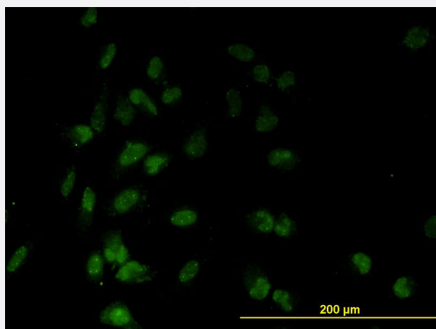
## RNAi Knockdown (Antibody validated)

Western blot analysis of TAF7 over-expressed 293 cell line, cotransfected with TAF7 Validated Chimera RNAi ( Cat # H00006879-R01V ) (Lane 2) or non-transfected control (Lane 1). Blot probed with TAF7 monoclonal antibody (M01), clone 2C5 (Cat # H00006879-M01 ). GAPDH ( 36.1 kDa ) used as specificity and loading control.

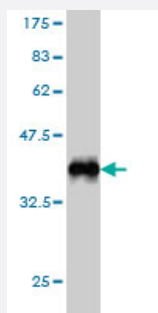


## Immunofluorescence

Immunofluorescence of monoclonal antibody to TAF7 on HeLa cell. [antibody concentration 10 ug/ml]



Western Blot detection against Immunogen (36.08 KDa) .



## Specification

### Product Description

Mouse monoclonal antibody raised against a partial recombinant TAF7.

### Immunogen

TAF7 (AAH32737, 130 a.a. ~ 224 a.a) partial recombinant protein with GST tag. MW of the GST tag alone is 26 KDa.

<b>Sequence</b>	FIWNHGITLPLKNVRKRRFRKTAKKKYIESPDVEKEVKRLLSTDAAVSTRWEIIAEDETKEAENQG LDISSPGMSGHRQGHDSLEHDELREIFN
<b>Host</b>	Mouse
<b>Reactivity</b>	Human
<b>Isotype</b>	IgG2a Kappa
<b>Quality Control Testing</b>	Antibody Reactive Against Recombinant Protein. Western Blot detection against Immunogen (36.08 KDa) .
<b>Storage Buffer</b>	In 1x PBS, pH 7.4
<b>Storage Instruction</b>	Store at -20°C or lower. Aliquot to avoid repeated freezing and thawing.

## Applications

- Western Blot (Cell lysate)

TAF7 monoclonal antibody (M01), clone 2C5 Western Blot analysis of TAF7 expression in MCF-7 ( Cat # L046V1 ).

[Protocol Download](#)

- Western Blot (Transfected lysate)

Western Blot analysis of TAF7 expression in transfected 293T cell line by TAF7 monoclonal antibody (M01), clone 2C5.

Lane 1: TAF7 transfected lysate(40.3 KDa).

Lane 2: Non-transfected lysate.

[Protocol Download](#)

- Western Blot (Recombinant protein)

[Protocol Download](#)

- Immunohistochemistry (Formalin/PFA-fixed paraffin-embedded sections)

Immunoperoxidase of monoclonal antibody to TAF7 on formalin-fixed paraffin-embedded human lymph node. [antibody concentration 3 ug/ml]

[Protocol Download](#)

- Immunohistochemistry (Formalin/PFA-fixed paraffin-embedded sections)

Immunoperoxidase of monoclonal antibody to TAF7 on formalin-fixed paraffin-embedded human placenta. [antibody concentration 1 ug/ml]

[Protocol Download](#)

- Sandwich ELISA (Recombinant protein)

Detection limit for recombinant GST tagged TAF7 is approximately 0.3ng/ml as a capture antibody.

[Protocol Download](#)

- ELISA

- RNAi Knockdown (Antibody validated)

Western blot analysis of TAF7 over-expressed 293 cell line, cotransfected with TAF7 Validated Chimera RNAi ( Cat # H00006879-R01V ) (Lane 2) or non-transfected control (Lane 1). Blot probed with TAF7 monoclonal antibody (M01), clone 2C5 (Cat # H00006879-M01 ). GAPDH ( 36.1 kDa ) used as specificity and loading control.

[Protocol Download](#)

- Immunofluorescence

Immunofluorescence of monoclonal antibody to TAF7 on HeLa cell. [antibody concentration 10 ug/ml]

## Gene Info — TAF7

Entrez GeneID	<a href="#">6879</a>
GeneBank Accession#	<a href="#">BC032737</a>
Protein Accession#	<a href="#">AAH32737</a>
Gene Name	TAF7
Gene Alias	TAF2F, TAFII55
Gene Description	TAF7 RNA polymerase II, TATA box binding protein (TBP)-associated factor, 55kDa
Omim ID	<a href="#">600573</a>
Gene Ontology	<a href="#">Hyperlink</a>
Gene Summary	The intronless gene for this transcription coactivator is located between the protocadherin beta and gamma gene clusters on chromosome 5. The protein encoded by this gene is a component of the TFIID protein complex, a complex which binds to the TATA box in class II promoters and recruits RNA polymerase II and other factors. This particular subunit interacts with the largest TFIID subunit, as well as multiple transcription activators. The protein is required for transcription by promoters targeted by RNA polymerase II. [provided by RefSeq]
Other Designations	OTTHUMP00000160028[TAF7 RNA polymerase II, TATA box binding protein (TBP)-associated factor, 55 kD][TATA box binding protein (TBP)-associated factor, RNA polymerase II, F, 55kD][TATA box-binding protein-associated factor 2F][TBP-associated factor F][transcript

## Publication Reference

- [The nuclear transcription factor, TAF7, is a cytoplasmic regulator of protein synthesis.](#)

Dan Cheng, Kevin Semmens, Elizabeth McManus, Qingrong Chen, Daoud Meerzaman, Xiantao Wang, Markus Hafner, Brian A Lewis, Hidehisa Takahashi, Ballachanda N Devaiah, Anne Geggion, Dinah S Singer.

Science Advances 2021 Dec; 7(50):eabi5751.

Application: IF, IP, IP-WB, WB-Ce, Human, Mouse, Hela, Hela S3 cells, Mouse lymphoma

- [Core promoter factor TAF9B regulates neuronal gene expression.](#)

Herrera FJ, Yamaguchi T, Roelink H, Tjian R.

ELife 2014 Jul; 3:e02559.

Application: WB-Ce, Mouse, ES cells

- [Taf7l cooperates with Trf2 to regulate spermiogenesis.](#)

Zhou H, Grubisic I, Zheng K, He Y, Wang PJ, Kaplan T, Tjian R.

PNAS 2013 Oct; 110(42):16886.

Application: WB-Ti, Mouse, Testis

- [Dual functions of TAF7L in adipocyte differentiation.](#)

Zhou H, Kaplan T, Li Y, Grubisic I, Zhang Z, Wang PJ, Eisen MB, Tjian R.

elife 2013 Jan; 2:e00170.

Application: WB, Mouse, C3H10T1/2 cells

- [Core promoter recognition complex changes accompany liver development.](#)

D'Alessio JA, Ng R, Willenbring H, Tjian R.

PNAS 2011 Mar; 108(10):3906.

Application: WB-Ce, Mouse, Hepatoblasts, Hepatocytes

## Pathway

- [Basal transcription factors](#)