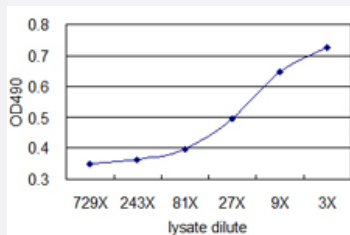


TAGLN (Human) Matched Antibody Pair

Catalog # H00006876-AP42

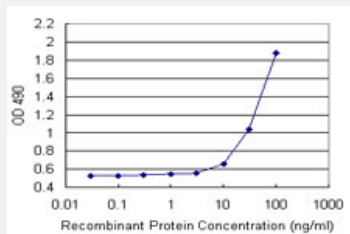
Size 1 Set

Applications



ELISA Pair (Transfected lysate)

Standard curve using TAGLN 293T overexpression lysate (non-denatured) as an analyte. Sandwich ELISA detection sensitivity ranging from approximately 27x to 3x dilution of the TAGLN 293T overexpression lysate (non-denatured).



Sandwich ELISA detection sensitivity ranging from 10 ng/ml to 100 ng/ml.

Specification

Product Description

This antibody pair set comes with a matched antibody pair to detect and quantify the protein level of human TAGLN.

Reactivity

Human

Quality Control Testing

Standard curve using recombinant protein (H00006876-P01) as an analyte. Sandwich ELISA detection sensitivity ranging from 10 ng/ml to 100 ng/ml.

Supplied Product

Antibody pair set content:

1. Capture antibody: mouse monoclonal anti-TAGLN (100 ug)
2. Detection antibody: biotinylated mouse monoclonal anti-TAGLN, IgG2a Kappa (50 ug)

*Reagents are sufficient for at least 3-5 x 96 well plates using recommended protocols.

Storage Instruction

Store reagents of the antibody pair set at -20°C or lower. Please aliquot to avoid repeated freeze thaw cycle. Reagents should be returned to -20°C storage immediately after use.

Applications

- ELISA Pair (Recombinant protein)

[Protocol Download](#)

- ELISA Pair (Transfected lysate)

Standard curve using TAGLN 293T overexpression lysate (non-denatured) as an analyte. Sandwich ELISA detection sensitivity ranging from approximately 27x to 3x dilution of the TAGLN 293T overexpression lysate (non-denatured).

[Protocol Download](#)

Gene Info — TAGLN

Entrez GeneID [6876](#)

Gene Name TAGLN

Gene Alias DKFZp686P11128, SM22, SMCC, TAGLN1, WS3-10

Gene Description transgelin

Omim ID [600818](#)

Gene Ontology [Hyperlink](#)

Gene Summary The protein encoded by this gene is a transformation and shape-change sensitive actin cross-linking/gelling protein found in fibroblasts and smooth muscle. Its expression is down-regulated in many cell lines, and this down-regulation may be an early and sensitive marker for the onset of transformation. A functional role of this protein is unclear. Two transcript variants encoding the same protein have been found for this gene. [provided by RefSeq]

Other Designations SM22-alpha|transgelin variant 2

Disease

- [Cardiovascular Diseases](#)
- [Diabetes Mellitus](#)

- [Edema](#)
- [Genetic Predisposition to Disease](#)
- [Prostatic Neoplasms](#)
- [Tobacco Use Disorder](#)