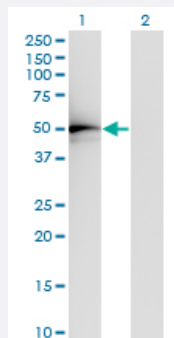


TADA2L monoclonal antibody (M01), clone 4A8-1A7

Catalog # H00006871-M01

Size 100 ug

Applications

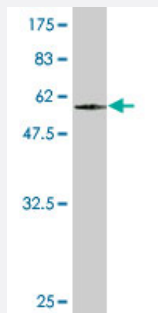


Western Blot (Transfected lysate)

Western Blot analysis of TADA2L expression in transfected 293T cell line by TADA2L monoclonal antibody (M01), clone 4A8-1A7.

Lane 1: TADA2L transfected lysate (Predicted MW: 51.5 KDa).

Lane 2: Non-transfected lysate.



Western Blot detection against Immunogen (59.29 KDa) .

Specification

| | |
|---------------------|---|
| Product Description | Mouse monoclonal antibody raised against a full length recombinant TADA2L. |
| Immunogen | TADA2L (AAH01172, 1 a.a. ~ 305 a.a) full-length recombinant protein with GST tag. MW of the GST tag alone is 26 KDa. |
| Sequence | MDRLGSFSNDPSDKPPCRGCSSYLMEPYKCAECGPPPFLLCLQCFTRGFEYKKHRS DHTYEIM TSDFPVLDPSWTAQEEMALLEAVMDCGFGNWQDVANQMCTKTKEECEKHYMKYFINNPLFAST LLNLKQAEAAKTADTAIPFHSTDDPPRPTFDSLLSRDMAGYMPARADFIEEFDNYAEWDLRDIDF VEDDSILHALKMAVVDIYHSRLKERQRRKKIIRDHGLINLRKFQLMERRYPKYQDLYETMRRFARI VGPVEHDKFIESHACRWFLSLEQYLCVYINRRDNGVFYVKFYK |
| Host | Mouse |

| | |
|-------------------------------|--|
| Reactivity | Human |
| Interspecies Antigen Sequence | Mouse (95); Rat (95) |
| Isotype | IgG1 kappa |
| Quality Control Testing | Antibody Reactive Against Recombinant Protein. Western Blot detection against Immunogen (59.29 KDa) . |
| Storage Buffer | In 1x PBS, pH 7.4 |
| Storage Instruction | Store at -20°C or lower. Aliquot to avoid repeated freezing and thawing. |

Applications

- Western Blot (Transfected lysate)

Western Blot analysis of TADA2L expression in transfected 293T cell line by TADA2L monoclonal antibody (M01), clone 4A8-1A7.

Lane 1: TADA2L transfected lysate (Predicted MW: 51.5 KDa).

Lane 2: Non-transfected lysate.

[Protocol Download](#)

- Western Blot (Recombinant protein)

[Protocol Download](#)

- ELISA

Gene Info — TADA2L

| | |
|---------------------|--|
| Entrez GeneID | 6871 |
| GeneBank Accession# | BC001172 |
| Protein Accession# | AAH01172 |
| Gene Name | TADA2L |
| Gene Alias | ADA2, ADA2A, FLJ12705, KL04P, hADA2 |
| Gene Description | transcriptional adaptor 2 (ADA2 homolog, yeast)-like |

Omim ID [602276](#)

Gene Ontology [Hyperlink](#)

Gene Summary

Many DNA-binding transcriptional activator proteins enhance the initiation rate of RNA polymerase II-mediated gene transcription by interacting functionally with the general transcription machinery bound at the basal promoter. Adaptor proteins are usually required for this activation, possibly to acetylate and destabilize nucleosomes, thereby relieving chromatin constraints at the promoter. The protein encoded by this gene is a transcriptional activator adaptor and has been found to be part of the PCAF histone acetylase complex. Two transcript variants encoding different isoforms have been identified for this gene. [provided by RefSeq]

Other Designations

ADA2-like|OTTHUMP00000164063|transcriptional adaptor 2 (ADA2, yeast, homolog)-like|transcriptional adaptor 2 alpha|transcriptional adaptor 2-like

Disease

- [Hypercholesterolemia](#)