

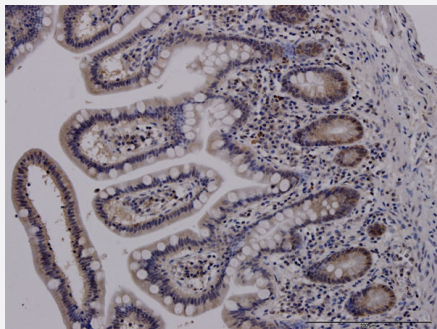
CX Grade

ADAM17 monoclonal antibody (M01J), clone 1F6

Catalog # H00006868-M01J

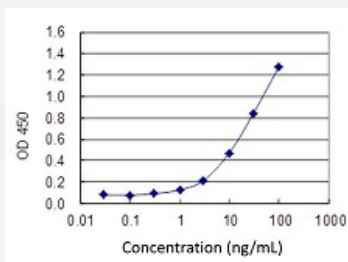
Size 100 ug

Applications



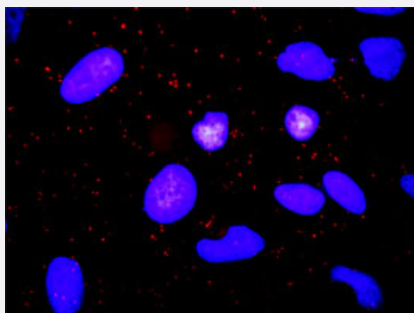
Immunohistochemistry (Formalin/PFA-fixed paraffin-embedded sections)

Immunoperoxidase of monoclonal antibody to ADAM17 on formalin-fixed paraffin-embedded human small intestine. [antibody concentration 3 ug/ml]



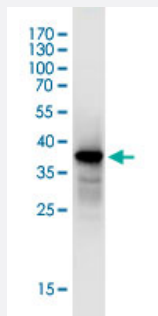
Sandwich ELISA (Recombinant protein)

Detection limit for recombinant GST tagged ADAM17 is 0.3 ng/ml as a capture antibody.



In situ Proximity Ligation Assay (Cell)

Proximity Ligation Analysis of protein-protein interactions between TGFA and ADAM17. HeLa cells were stained with anti-TGFA rabbit purified polyclonal 1:1200 and anti-ADAM17 mouse monoclonal antibody 1:50. Each red dot represents the detection of protein-protein interaction complex, and nuclei were counterstained with DAPI (blue).



Western Blot detection against Immunogen (36.74 KDa) .

Specification

Product Description	Mouse monoclonal antibody raised against a partial recombinant ADAM17. This product is belong to Cell Culture Grade Antibody (CX Grade).
Immunogen	ADAM17 (NP_003174.3, 215 a.a. ~ 314 a.a) partial recombinant protein with GST tag. MW of the GST tag alone is 26 KDa.
Sequence	RADPDPMKNTCKLLVVADHRFYRYMGRGEESTTTNYLIELIDRVDDIYRNTSWDNAGFKGYGIQIEQ IRILKSPQEVKPGKEKHYNMAKSYPNEEKDAWDV
Host	Mouse
Reactivity	Human
Interspecies Antigen Sequence	Mouse (92); Rat (92)
Preparation Method	Cell Culture Production
Isotype	IgG2b Kappa
Quality Control Testing	Antibody Reactive Against Recombinant Protein. Western Blot detection against Immunogen (36.74 KDa) .
Storage Buffer	In 1x PBS, pH 7.4
Storage Instruction	Store at -20°C or lower. Aliquot to avoid repeated freezing and thawing.

Applications

- Western Blot (Recombinant protein)

[Protocol Download](#)

- Immunohistochemistry (Formalin/PFA-fixed paraffin-embedded sections)

Immunoperoxidase of monoclonal antibody to ADAM17 on formalin-fixed paraffin-embedded human small intestine. [antibody concentration 3 ug/ml]

[Protocol Download](#)

- Sandwich ELISA (Recombinant protein)

Detection limit for recombinant GST tagged ADAM17 is 0.3 ng/ml as a capture antibody.

[Protocol Download](#)

- ELISA

- In situ* Proximity Ligation Assay (Cell)

Proximity Ligation Analysis of protein-protein interactions between TGFA and ADAM17. HeLa cells were stained with anti-TGFA rabbit purified polyclonal 1:1200 and anti-ADAM17 mouse monoclonal antibody 1:50. Each red dot represents the detection of protein-protein interaction complex, and nuclei were counterstained with DAPI (blue).

Gene Info — ADAM17

Entrez GeneID [6868](#)

GeneBank Accession# [NM_003183.4](#)

Protein Accession# [NP_003174.3](#)

Gene Name ADAM17

Gene Alias CD156b, MGC71942, TACE, cSVP

Gene Description ADAM metallopeptidase domain 17

Omim ID [603639](#)

Gene Ontology [Hyperlink](#)

Gene Summary This gene encodes a member of the ADAM (a disintegrin and metalloprotease domain) family. Members of this family are membrane-anchored proteins structurally related to snake venom disintegrins, and have been implicated in a variety of biologic processes involving cell-cell and cell-matrix interactions, including fertilization, muscle development, and neurogenesis. The protein encoded by this gene functions as a tumor necrosis factor-alpha converting enzyme; binds mitotic arrest deficient 2 protein; and also plays a prominent role in the activation of the Notch signaling pathway. [provided by RefSeq]

Other Designations

TNF-alpha converting enzyme|a disintegrin and metalloproteinase domain 17 (tumor necrosis factor, alpha, converting enzyme)|snake venom-like protease|tumor necrosis factor, alpha, converting enzyme

Pathway

- [Epithelial cell signaling in Helicobacter pylori infection](#)
- [Notch signaling pathway](#)

Disease

- [Alzheimer Disease](#)
- [Arthritis](#)
- [Breast cancer](#)
- [Breast Neoplasms](#)
- [Cardiovascular Diseases](#)
- [Chronic Disease](#)
- [Cleft Lip](#)
- [Cleft Palate](#)
- [Coronary Artery Disease](#)
- [Crohn Disease](#)
- [Diabetes Mellitus](#)
- [Edema](#)
- [Genetic Predisposition to Disease](#)
- [Lymphoma](#)
- [Myocardial Infarction](#)
- [Peripheral Vascular Diseases](#)
- [Tobacco Use Disorder](#)

- [Tooth Abnormalities](#)