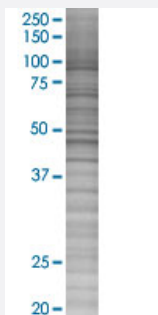


# T 293T Cell Transient Overexpression Lysate(Denatured)

Catalog # H00006862-T02

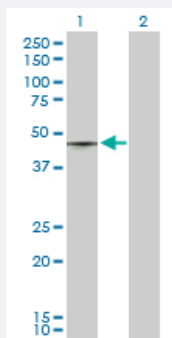
Size 100 uL

## Applications



### SDS-PAGE Gel

T transfected lysate.



### Western Blot

Lane 1: T transfected lysate ( 41.10 KDa)

Lane 2: Non-transfected lysate.

## Specification

**Transfected Cell Line** 293T

**Plasmid** pCMV-T full-length

**Host** Human

**Theoretical MW (kDa)** 41.1

**Quality Control Testing** Transient overexpression cell lysate was tested with Anti-T antibody ([H00006862-D03P](#)) by Western Blots.  
SDS-PAGE Gel  
T transfected lysate.  
Western Blot  
Lane 1: T transfected lysate ( 41.10 KDa)  
Lane 2: Non-transfected lysate.

**Storage Buffer**

1X Sample Buffer (50 mM Tris-HCl, 2% SDS, 10% glycerol, 300 mM 2-mercaptoethanol, 0.01% Bromophenol blue)

**Storage Instruction**

Store at -80°C. Aliquot to avoid repeated freezing and thawing.

## Applications

- Western Blot

## Gene Info — T

**Entrez GeneID**

[6862](#)

**GeneBank Accession#**

[BC098425.1](#)

**Protein Accession#**

[AAH98425.1](#)

**Gene Name**

T

**Gene Alias**

MGC104817, TFT

**Gene Description**

T, brachyury homolog (mouse)

**Omim ID**

[182940 601397](#)

**Gene Ontology**

[Hyperlink](#)

**Gene Summary**

The protein encoded by this gene is an embryonic nuclear transcription factor that binds to a specific DNA element, the palindromic T-site. It binds through a region in its N-terminus, called the T-box, and effects transcription of genes required for mesoderm formation and differentiation. The protein is localized to notochord-derived cells. [provided by RefSeq]

**Other Designations**

OTTHUMP00000017588|T brachyury homolog|T brachyury-like|transcription factor T

## Disease

- [Cognition](#)