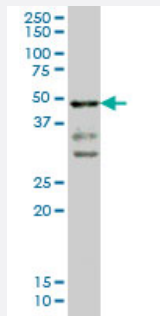


# T monoclonal antibody (M02), clone 5C5

Catalog # H00006862-M02

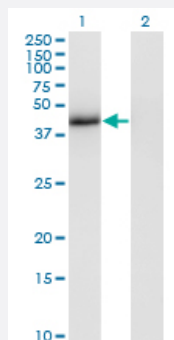
Size 100 ug

## Applications



### Western Blot (Cell lysate)

T monoclonal antibody (M02), clone 5C5 Western Blot analysis of T expression in A-549 ( Cat # L025V1 ).

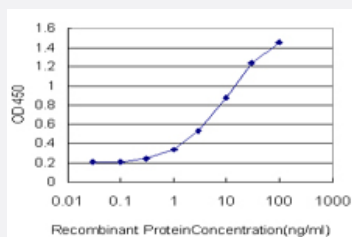


### Western Blot (Transfected lysate)

Western Blot analysis of T expression in transfected 293T cell line by T monoclonal antibody (M02), clone 5C5.

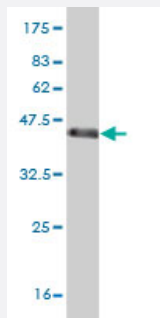
Lane 1: T transfected lysate(41.1 KDa).

Lane 2: Non-transfected lysate.



### Sandwich ELISA (Recombinant protein)

Detection limit for recombinant GST tagged T is approximately 0.3ng/ml as a capture antibody.



Western Blot detection against Immunogen (36.63 KDa) .

## Specification

<b>Product Description</b>	Mouse monoclonal antibody raised against a partial recombinant T.
<b>Immunogen</b>	T (NP_003172, 222 a.a. ~ 320 a.a) partial recombinant protein with GST tag. MW of the GST tag alone is 26 KDa.
<b>Sequence</b>	ERSDHKEMMEEPGDSQQPGYSQWGWLLPGTSTLCPPANPHPQFGGALSLPSTHSCDRYPTLR SHRSSPYSPYAHNRNNSPTYSDNSPACLSMLQSHDNW
<b>Host</b>	Mouse
<b>Reactivity</b>	Human
<b>Isotype</b>	IgG2a Kappa
<b>Quality Control Testing</b>	Antibody Reactive Against Recombinant Protein. Western Blot detection against Immunogen (36.63 KDa) .
<b>Storage Buffer</b>	In 1x PBS, pH 7.4
<b>Storage Instruction</b>	Store at -20°C or lower. Aliquot to avoid repeated freezing and thawing.

## Applications

- Western Blot (Cell lysate)

T monoclonal antibody (M02), clone 5C5 Western Blot analysis of T expression in A-549 ( Cat # L025V1 ).

[Protocol Download](#)

- Western Blot (Transfected lysate)

Western Blot analysis of T expression in transfected 293T cell line by T monoclonal antibody (M02), clone 5C5.

Lane 1: T transfected lysate(41.1 KDa).

Lane 2: Non-transfected lysate.

[Protocol Download](#)

- Western Blot (Recombinant protein)

[Protocol Download](#)

- Sandwich ELISA (Recombinant protein)

Detection limit for recombinant GST tagged T is approximately 0.3ng/ml as a capture antibody.

[Protocol Download](#)

- ELISA

## Gene Info — T

Entrez GeneID [6862](#)

GeneBank Accession# [NM\\_003181](#)

Protein Accession# [NP\\_003172](#)

Gene Name T

Gene Alias MGC104817, TFT

Gene Description T, brachyury homolog (mouse)

Omim ID [182940 601397](#)

Gene Ontology [Hyperlink](#)

**Gene Summary** The protein encoded by this gene is an embryonic nuclear transcription factor that binds to a specific DNA element, the palindromic T-site. It binds through a region in its N-terminus, called the T-box, and effects transcription of genes required for mesoderm formation and differentiation. The protein is localized to notochord-derived cells. [provided by RefSeq]

**Other Designations** OTTHUMP00000017588|T brachyury homolog|T brachyury-like|transcription factor T

## Disease

- [Cognition](#)