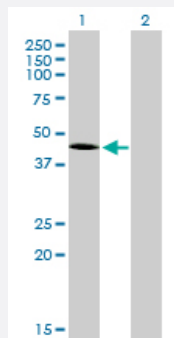


T monoclonal antibody (M01), clone 5H8

Catalog # H00006862-M01

Size 100 ug

Applications

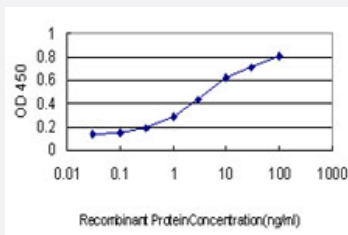


Western Blot (Transfected lysate)

Western Blot analysis of T expression in transfected 293T cell line by T monoclonal antibody (M01), clone 5H8.

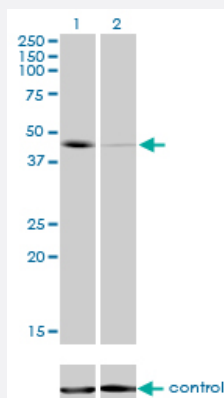
Lane 1: T transfected lysate (41.1 KDa).

Lane 2: Non-transfected lysate.



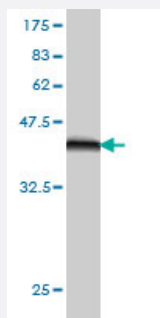
Sandwich ELISA (Recombinant protein)

Detection limit for recombinant GST tagged T is approximately 0.03 ng/ml as a capture antibody.



RNAi Knockdown (Antibody validated)

Western blot analysis of T over-expressed 293 cell line, cotransfected with T Validated Chimera RNAi (Cat # H00006862-R01V) (Lane 2) or non-transfected control (Lane 1). Blot probed with T monoclonal antibody (M01), clone 5H8 (Cat # H00006862-M01). GAPDH (36.1 kDa) used as specificity and loading control.



Western Blot detection against Immunogen (36.63 KDa) .

Specification

Product Description	Mouse monoclonal antibody raised against a partial recombinant T.
Immunogen	T (NP_003172, 222 a.a. ~ 320 a.a) partial recombinant protein with GST tag. MW of the GST tag alone is 26 KDa.
Sequence	ERSDHKEMMEEPGDSQQPGYSQWGWLLPGTSTLCPPANPHPQFGGALSLPSTHSCDRYPTLR SHRSSPYSPYAHNRNNSPTYSDNSPACLSMLQSHDNW
Host	Mouse
Reactivity	Human
Isotype	IgG2a Kappa
Quality Control Testing	Antibody Reactive Against Recombinant Protein. Western Blot detection against Immunogen (36.63 KDa) .
Storage Buffer	In 1x PBS, pH 7.4
Storage Instruction	Store at -20°C or lower. Aliquot to avoid repeated freezing and thawing.

Applications

- Western Blot (Transfected lysate)

Western Blot analysis of T expression in transfected 293T cell line by T monoclonal antibody (M01), clone 5H8.

Lane 1: T transfected lysate(41.1 KDa).

Lane 2: Non-transfected lysate.

[Protocol Download](#)

- Western Blot (Recombinant protein)

[Protocol Download](#)

- Sandwich ELISA (Recombinant protein)

Detection limit for recombinant GST tagged T is approximately 0.03ng/ml as a capture antibody.

[Protocol Download](#)

- ELISA

- RNAi Knockdown (Antibody validated)

Western blot analysis of T over-expressed 293 cell line, cotransfected with T Validated Chimera RNAi (Cat # H00006862-R01V) (Lane 2) or non-transfected control (Lane 1). Blot probed with T monoclonal antibody (M01), clone 5H8 (Cat # H00006862-M01). GAPDH (36.1 kDa) used as specificity and loading control.

[Protocol Download](#)

Gene Info — T

Entrez GeneID [6862](#)

GeneBank Accession# [NM_003181](#)

Protein Accession# [NP_003172](#)

Gene Name T

Gene Alias MGC104817, TFT

Gene Description T, brachyury homolog (mouse)

Omim ID [182940 601397](#)

Gene Ontology [Hyperlink](#)

Gene Summary The protein encoded by this gene is an embryonic nuclear transcription factor that binds to a specific DNA element, the palindromic T-site. It binds through a region in its N-terminus, called the T-box, and effects transcription of genes required for mesoderm formation and differentiation. The protein is localized to notochord-derived cells. [provided by RefSeq]

Other Designations OTTHUMP00000017588|T brachyury homolog|T brachyury-like|transcription factor T

Disease

- [Cognition](#)