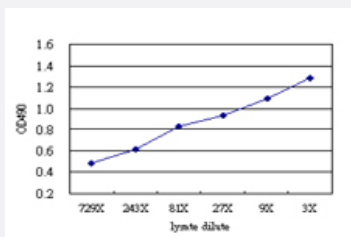


T (Human) Matched Antibody Pair

Catalog # H00006862-AP51 Size 1 Set

Applications



Sandwich ELISA detection sensitivity ranging from approximately 729x to 3x dilution of the T 293T overexpression lysate (non-denatured).

Specification

Product Description	This antibody pair set comes with a matched antibody pair to detect and quantify the protein level of human T.
Reactivity	Human
Quality Control Testing	Standard curve using T 293T overexpression lysate (non-denatured) as an analyte. Sandwich ELISA detection sensitivity ranging from approximately 729x to 3x dilution of the T 293T overexpression lysate (non-denatured).
Supplied Product	Antibody pair set content: 1. Capture antibody: mouse monoclonal anti-T (100 ug) 2. Detection antibody: rabbit purified polyclonal anti-T (50 ug) *Reagents are sufficient for at least 3-5 x 96 well plates using recommended protocols.
Storage Instruction	Store reagents of the antibody pair set at -20°C or lower. Please aliquot to avoid repeated freeze thaw cycle. Reagents should be returned to -20°C storage immediately after use.

Applications

- ELISA Pair (Transfected lysate)

[Protocol Download](#)

Gene Info — T

Entrez GeneID	6862
Gene Name	T
Gene Alias	MGC104817, TFT
Gene Description	T, brachyury homolog (mouse)
Omim ID	182940 601397
Gene Ontology	Hyperlink
Gene Summary	The protein encoded by this gene is an embryonic nuclear transcription factor that binds to a specific DNA element, the palindromic T-site. It binds through a region in its N-terminus, called the T-box, and effects transcription of genes required for mesoderm formation and differentiation. The protein is localized to notochord-derived cells. [provided by RefSeq]
Other Designations	OTTHUMP00000017588 T brachyury homolog T brachyury-like transcription factor T

Disease

- [Cognition](#)