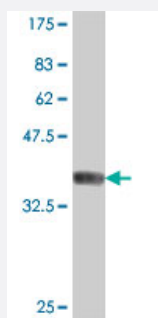


SYN2 polyclonal antibody (A01)

Catalog # H00006854-A01

Size 50 uL

Applications



Western Blot detection against Immunogen (37.22 KDa) .

Specification

Product Description	Mouse polyclonal antibody raised against a partial recombinant SYN2.
Immunogen	SYN2 (NP_598328, 348 a.a. ~ 448 a.a) partial recombinant protein with GST tag.
Sequence	AMSDRYKLWVDTCSMFGLDICA VKAVHGKDGDYIFEVMDCSMPLIGEHQVEDRQLITELVIS KMNQLLSRTPALSPQRPLTTQPQSGTLKDPDSSKT
Host	Mouse
Reactivity	Human
Interspecies Antigen Sequence	Mouse (97)
Quality Control Testing	Antibody Reactive Against Recombinant Protein. Western Blot detection against Immunogen (37.22 KDa) .
Storage Buffer	50 % glycerol
Storage Instruction	Store at -20°C or lower. Aliquot to avoid repeated freezing and thawing.

Applications

- Western Blot (Recombinant protein)

[Protocol Download](#)

- ELISA

Gene Info — SYN2

Entrez GeneID [6854](#)

GeneBank Accession# [NM_133625](#)

Protein Accession# [NP_598328](#)

Gene Name SYN2

Gene Alias SYNII, SYNIIa, SYNIIb

Gene Description synapsin II

Omim ID [181500 600755](#)

Gene Ontology [Hyperlink](#)

Gene Summary

This gene is a member of the synapsin gene family. Synapsins encode neuronal phosphoproteins which associate with the cytoplasmic surface of synaptic vesicles. Family members are characterized by common protein domains, and they are implicated in synaptogenesis and the modulation of neurotransmitter release, suggesting a potential role in several neuropsychiatric diseases. This member of the synapsin family encodes a neuron-specific phosphoprotein that selectively binds to small synaptic vesicles in the presynaptic nerve terminal. The TIMP4 gene is located within an intron of this gene and is transcribed in the opposite direction. Mutations in this gene may be associated with abnormal presynaptic function and schizophrenia. Alternative splicing of this gene results in two transcripts. [provided by RefSeq]

Other Designations -

Disease

- [Bipolar Disorder](#)
- [Cardiovascular Diseases](#)
- [Diabetes Mellitus](#)
- [Edema](#)

- [Epilepsy](#)
- [Genetic Predisposition to Disease](#)
- [Schizophrenia](#)
- [Seizures](#)
- [Syndrome](#)
- [Tobacco Use Disorder](#)