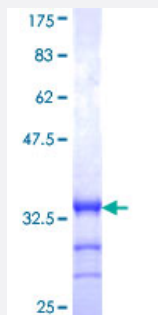


VAMP1 (Human) Recombinant Protein (Q01)

Catalog # H00006843-Q01

Size 25 ug, 10 ug

Applications



Specification

Product Description	Human VAMP1 partial ORF (NP_055046, 28 a.a. - 96 a.a.) recombinant protein with GST-tag at N-terminal.
Sequence	MTSNRRLQQTQAQVEEVVDIIRVNVDKVLERDQKLSELDDRADALQAGASQFESSAAKLKRKYW WKNCK
Host	Wheat Germ (in vitro)
Theoretical MW (kDa)	33.33
Interspecies Antigen Sequence	Mouse (99)
Preparation Method	in vitro wheat germ expression system
Purification	Glutathione Sepharose 4 Fast Flow
Quality Control Testing	12.5% SDS-PAGE Stained with Coomassie Blue.
Storage Buffer	50 mM Tris-HCl, 10 mM reduced Glutathione, pH=8.0 in the elution buffer.
Storage Instruction	Store at -80°C. Aliquot to avoid repeated freezing and thawing.
Note	Best use within three months from the date of receipt of this protein.

Applications

- Enzyme-linked Immunoabsorbent Assay
- Western Blot (Recombinant protein)
- Antibody Production
- Protein Array

Gene Info — VAMP1

Entrez GeneID [6843](#)

GeneBank Accession# [NM_014231](#)

Protein Accession# [NP_055046](#)

Gene Name VAMP1

Gene Alias DKFZp686H12131, SYB1, VAMP-1

Gene Description vesicle-associated membrane protein 1 (synaptobrevin 1)

Omim ID [185880](#)

Gene Ontology [Hyperlink](#)

Gene Summary Synaptobrevins/VAMPs, syntaxins, and the 25-kD synaptosomal-associated protein SNAP25 are the main components of a protein complex involved in the docking and/or fusion of synaptic vesicles with the presynaptic membrane. VAMP1 is a member of the vesicle-associated membrane protein (VAMP)/synaptobrevin family. Multiple alternative splice variants that encode proteins with alternative carboxy ends have been described, but the full-length nature of some variants has not been defined. [provided by RefSeq]

Other Designations synaptobrevin 1|vesicle-associated membrane protein 1

Pathway

- [SNARE interactions in vesicular transport](#)