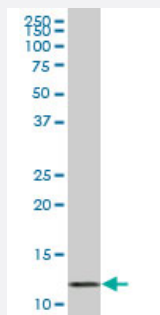


VAMP1 monoclonal antibody (M01), clone 5F3

Catalog # H00006843-M01

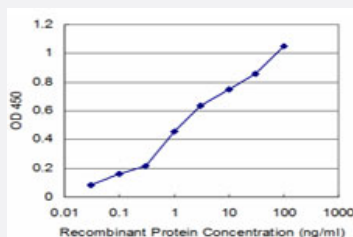
Size 100 ug

Applications



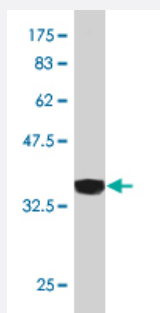
Western Blot (Cell lysate)

VAMP1 monoclonal antibody (M01), clone 5F3. Western Blot analysis of VAMP1 expression in HepG2 (Cat # L019V1).



Sandwich ELISA (Recombinant protein)

Detection limit for recombinant GST tagged VAMP1 is approximately 0.1ng/ml as a capture antibody.



Western Blot detection against Immunogen (33.33 KDa) .

Specification

Product Description

Mouse monoclonal antibody raised against a partial recombinant VAMP1.

Immunogen	VAMP1 (NP_055046, 28 a.a. ~ 96 a.a) partial recombinant protein with GST tag. MW of the GST tag alone is 26 KDa.
Sequence	MTSNRRLQQTQAQVEEVVDIIIRVNVDKVLERDQKLSELDADRADALQAGASQFESSAAKLKRKYW WKNCK
Host	Mouse
Reactivity	Human
Interspecies Antigen Sequence	Mouse (99)
Isotype	IgG2a Lambda
Quality Control Testing	Antibody Reactive Against Recombinant Protein. Western Blot detection against Immunogen (33.33 KDa) .
Storage Buffer	In 1x PBS, pH 7.4
Storage Instruction	Store at -20°C or lower. Aliquot to avoid repeated freezing and thawing.

Applications

- Western Blot (Cell lysate)

VAMP1 monoclonal antibody (M01), clone 5F3. Western Blot analysis of VAMP1 expression in HepG2 (Cat # L019V1).

[Protocol Download](#)

- Western Blot (Recombinant protein)

[Protocol Download](#)

- Sandwich ELISA (Recombinant protein)

Detection limit for recombinant GST tagged VAMP1 is approximately 0.1ng/ml as a capture antibody.

[Protocol Download](#)

- ELISA

Gene Info — VAMP1

Entrez GeneID [6843](#)

GeneBank Accession#	NM_014231
Protein Accession#	NP_055046
Gene Name	VAMP1
Gene Alias	DKFZp686H12131, SYB1, VAMP-1
Gene Description	vesicle-associated membrane protein 1 (synaptobrevin 1)
Omim ID	185880
Gene Ontology	Hyperlink
Gene Summary	Synaptobrevins/VAMPs, syntaxins, and the 25-kD synaptosomal-associated protein SNAP25 are the main components of a protein complex involved in the docking and/or fusion of synaptic vesicles with the presynaptic membrane. VAMP1 is a member of the vesicle-associated membrane protein (VAMP)/synaptobrevin family. Multiple alternative splice variants that encode proteins with alternative carboxy ends have been described, but the full-length nature of some variants has not been defined. [provided by RefSeq]
Other Designations	synaptobrevin 1 vesicle-associated membrane protein 1

Pathway

- [SNARE interactions in vesicular transport](#)