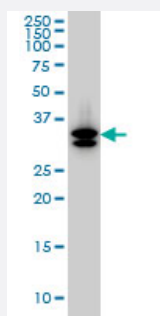


SULT1A3 monoclonal antibody (M01A), clone 1B10

Catalog # H00006818-M01A

Size 200 uL

Applications



Western Blot (Cell lysate)

SULT1A3 monoclonal antibody (M01A), clone 1B10 Western Blot analysis of SULT1A3 expression in HepG2 (Cat # L019V1).

Specification

Product Description

Mouse monoclonal antibody raised against a full-length recombinant SULT1A3.

Immunogen

SULT1A3 (AAH14471, 1 a.a. ~ 295 a.a) full-length recombinant protein with GST tag. MW of the GST tag alone is 26 KDa.

Sequence

MELIQDTSRPPLEYVKGVPLIKYFAEALGPLQSFQARPDDLINTYPKSGTTWVSQILDMIYQGGDL
EKCNRAPIYVRVPFLEVNDPGEPSGLETLKDTPPRLIKSHLPLALLPQTLLDQKVKVYVARNPK
DVAVSYYHFHRMEKAHPEPGTWDSFLEKFMAGEVSYGSWYQHVQEWWELSRTHPVLVLFYED
MKENPKREIQKILEFVGRSLPEETMDFMVQHTSFKEMKKNPMTNYTTVPQELMDHSISPFRKGM
AGDWKTTFTVAQNERFDADYAEKMAGCSLSFRSEL

Host

Mouse

Reactivity

Human

Isotype

IgG2a Kappa

Quality Control Testing

Antibody Reactive Against Recombinant Protein.

Storage Buffer

In ascites fluid

Storage Instruction

Store at -20°C or lower. Aliquot to avoid repeated freezing and thawing.

Applications

- Western Blot (Cell lysate)

SULT1A3 monoclonal antibody (M01A), clone 1B10 Western Blot analysis of SULT1A3 expression in HepG2 (Cat # L019V1).

[Protocol Download](#)

- ELISA

Gene Info — SULT1A3

Entrez GeneID [6818](#)

GeneBank Accession# [BC014471](#)

Protein Accession# [AAH14471](#)

Gene Name SULT1A3

Gene Alias HAST, HAST3, M-PST, MGC117469, ST1A5, STM, SULT1A4, TL-PST

Gene Description sulfotransferase family, cytosolic, 1A, phenol-preferring, member 3

Omim ID [600641](#)

Gene Ontology [Hyperlink](#)

Gene Summary Sulfotransferase enzymes catalyze the sulfate conjugation of many hormones, neurotransmitters, drugs, and xenobiotic compounds. These cytosolic enzymes are different in their tissue distributions and substrate specificities. The gene structure (number and length of exons) is similar among family members. This gene encodes a phenol sulfotransferase with thermolabile enzyme activity. Four sulfotransferase genes are located on the p arm of chromosome 16; this gene and SULT1A4 arose from a segmental duplication. This gene is the most centromeric of the four sulfotransferase genes. Exons of this gene overlap with exons of a gene that encodes a protein containing GIY-YIG domains (GYD1). Multiple alternatively spliced variants that encode the same protein have been described. [provided by RefSeq]

Other Designations OTTHUMP00000045747|aryl sulfotransferase|catecholamine-sulfating phenol sulfotransferase|dopamine-specific sulfotransferase|monoamine-preferring sulfotransferase|monoamine-sulfating phenosulfotransferase|phenol sulfotransferase 1A5*4|placental estrogen su

Pathway

- [Sulfur metabolism](#)