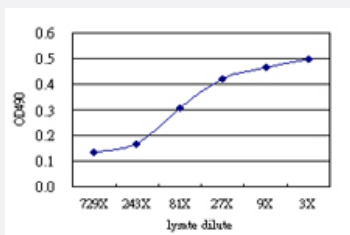


STX4 (Human) Matched Antibody Pair

Catalog # H00006810-AP51

Size 1 Set

Applications



Sandwich ELISA detection sensitivity ranging from approximately 243x to 3x dilution of the STX4 293T overexpression lysate (non-denatured).

Specification

Product Description

This antibody pair set comes with a matched antibody pair to detect and quantify the protein level of human STX4.

Reactivity

Human

Quality Control Testing

Standard curve using STX4 293T overexpression lysate (non-denatured) as an analyte. Sandwich ELISA detection sensitivity ranging from approximately 243x to 3x dilution of the STX4 293T overexpression lysate (non-denatured).

Supplied Product

Antibody pair set content:
 1. Capture antibody: mouse monoclonal anti-STX4 (100 ug)
 2. Detection antibody: rabbit purified polyclonal anti-STX4 (50 ug)
 *Reagents are sufficient for at least 3-5 x 96 well plates using recommended protocols.

Storage Instruction

Store reagents of the antibody pair set at -20°C or lower. Please aliquot to avoid repeated freeze thaw cycle. Reagents should be returned to -20°C storage immediately after use.

Applications

- ELISA Pair (Transfected lysate)

[Protocol Download](#)

Gene Info — STX4

Entrez GeneID	6810
Gene Name	STX4
Gene Alias	STX4A, p35-2
Gene Description	syntaxin 4
Omim ID	186591
Gene Ontology	Hyperlink
Other Designations	syntaxin 4A (placental)

Pathway

- [SNARE interactions in vesicular transport](#)