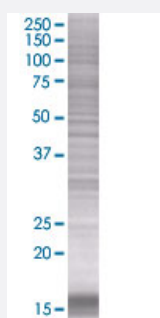


STK10 293T Cell Transient Overexpression Lysate(Denatured)

Catalog # H00006793-T01

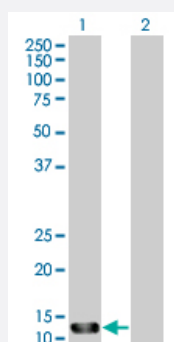
Size 100 uL

Applications



SDS-PAGE Gel

STK10 transfected lysate.



Western Blot

Lane 1: STK10 transfected lysate (14.74 KDa)

Lane 2: Non-transfected lysate.

Specification

Transfected Cell Line	293T
Plasmid	pCMV-STK10 full-length
Host	Human
Theoretical MW (kDa)	14.74
Interspecies Antigen Sequence	Mouse (54); Rat (54)

Quality Control Testing

Transient overexpression cell lysate was tested with Anti-STK10 antibody ([H00006793-B01](#)) by Western Blots.
SDS-PAGE Gel
STK10 transfected lysate.
Western Blot
Lane 1: STK10 transfected lysate (14.74 KDa)
Lane 2: Non-transfected lysate.

Storage Buffer

1X Sample Buffer (50 mM Tris-HCl, 2% SDS, 10% glycerol, 300 mM 2-mercaptoethanol, 0.01% Bromophenol blue)

Storage Instruction

Store at -80°C. Aliquot to avoid repeated freezing and thawing.

Applications

- Western Blot

Gene Info — STK10

Entrez GeneID[6793](#)**GeneBank Accession#**[BC014413](#)**Protein Accession#**[AAH14413](#)**Gene Name**

STK10

Gene Alias

LOK, PRO2729

Gene Description

serine/threonine kinase 10

Omim ID[603919](#)**Gene Ontology**[Hyperlink](#)**Gene Summary**

This gene encodes a member of the Ste20 family of serine/threonine protein kinases, and is similar to several known polo-like kinase kinases. The protein can associate with and phosphorylate polo-like kinase 1, and overexpression of a kinase-dead version of the protein interferes with normal cell cycle progression. The kinase can also negatively regulate interleukin 2 expression in T-cells via the mitogen activated protein kinase kinase 1 pathway. [provided by RefSeq]

Other Designations

lymphocyte-oriented kinase

Disease

- [Tobacco Use Disorder](#)